

# SIVVÁN



DURABLE BASICS

JUNE 2023





## SIVVAN

The Sivvan brand is composed of durable basics. Classic styles made from durable materials at affordable prices.

# TABLE OF CONTENT

<b>4</b>	<b>S8302</b> Women's Mock Wrap Top
<b>6</b>	<b>S8304</b> Unisex V-Neck 3 Pocket Top
<b>8</b>	<b>S8200</b> Women's Comfort Elastic Drawstring Cargo Pants
<b>10</b>	<b>S8306</b> Women's Warm Up Jacket
<b>12</b>	<b>S8400</b> Unisex V-Neck/Drawstring Pant Scrub Set
<b>14</b>	<b>S8500</b> Women's Long Sleeve Comfort Underscrub Tee
<b>16</b>	<b>S8700</b> Unisex Cobbler Apron
<b>END OF SEASON STYLES</b>	
<b>18</b>	<b>S8401</b> Women's Mock Wrap Top/Cargo Pant Scrub Set
<b>20</b>	<b>S8202</b> Unisex Drawstring Pants
<b>22</b>	<b>S8308</b> Men's Zippered Short Sleeve Jacket
<b>24</b>	<b>S8800</b> 31" Unisex Consultation Coat
<b>26</b>	<b>S8802</b> 39" Unisex Professional Lab Coat
<b>28</b>	<b>S8804</b> 33" Women's Modern Slim Lab Coat
<b>30</b>	<b>FIT GUIDE/SIZE CHARTS</b> Women's   Men's   Unisex
<b>33</b>	<b>FABRIC DETAILS</b> Fabric properties





CLASSIC FIT

Sizes: XXS-5X

Model wearing size XS



### PRODUCT DETAILS

- Mock wrap neck binding
- Empire midriff waist
- Side vents for ease of movement
- Two large slant pockets
- Center back length is 25 ½ inches in size M

### AVAILABLE COLORS

BLACK	CEIL BLUE
BURGUNDY	CHARCOAL
CARIBBEAN BLUE	HUNTER GREEN
WHITE	KHAKI
LAVENDER	NAVY
ROYAL BLUE	TEAL BLUE
PURPLE	MANDARIN ORANGE
SHERBET	



## WOMEN'S MOCK WRAP TOP

WOMEN'S

STYLE S8302

2 POCKETS

65% POLYESTER 35% COTTON, POPLIN

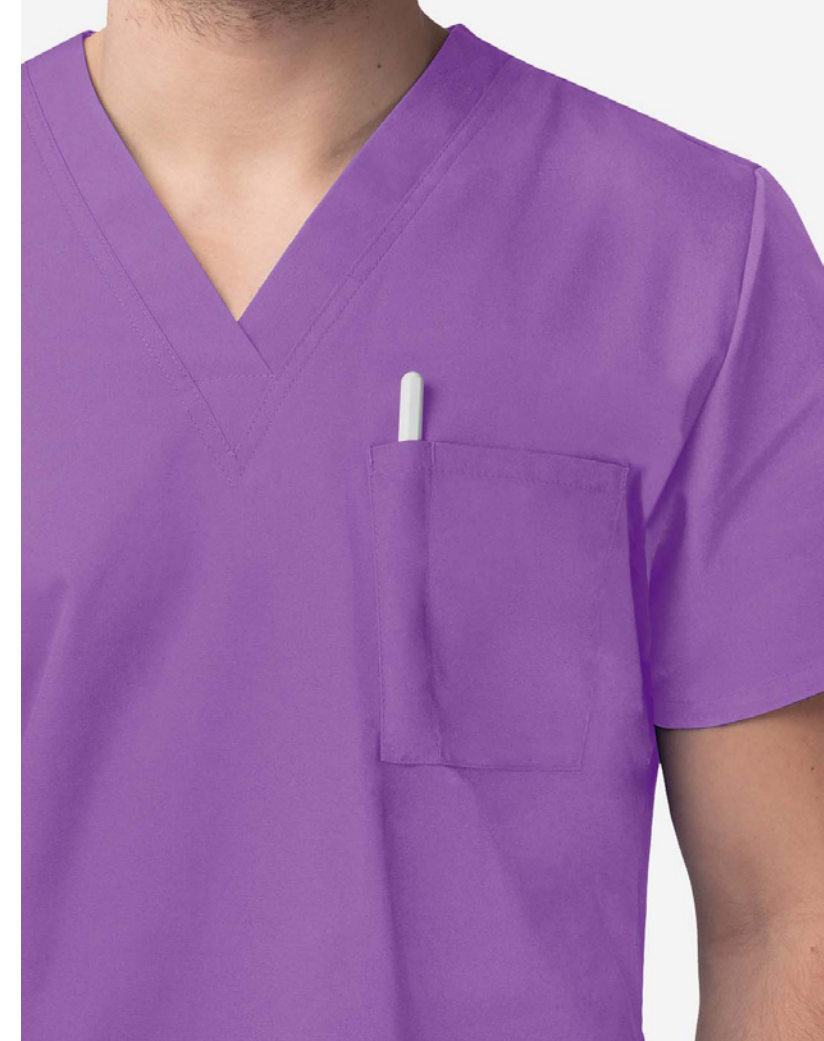




CLASSIC FIT

Sizes: XXS-5X

Male model wearing size M  
Female model wearing size XS



### PRODUCT DETAILS

- V-neck tunic styling
- Two roomy lower patch pockets
- Chest pocket with pen divider
- Side vents for easy movement
- Center back length 28 ½ inches in size M

### AVAILABLE COLORS

BLACK	CEIL BLUE
BURGUNDY	CHARCOAL
CARIBBEAN BLUE	HUNTER GREEN
WHITE	KHAKI
LAVENDER	NAVY
ROYAL BLUE	TEAL BLUE
PURPLE	MANDARIN ORANGE
SHERBET	



## UNISEX V-NECK 3 POCKET TOP

UNISEX

STYLE S8304

3 POCKETS

65% POLYESTER 35% COTTON, POPLIN





CLASSIC FIT

Sizes: XXS-5X

Model wearing size XS

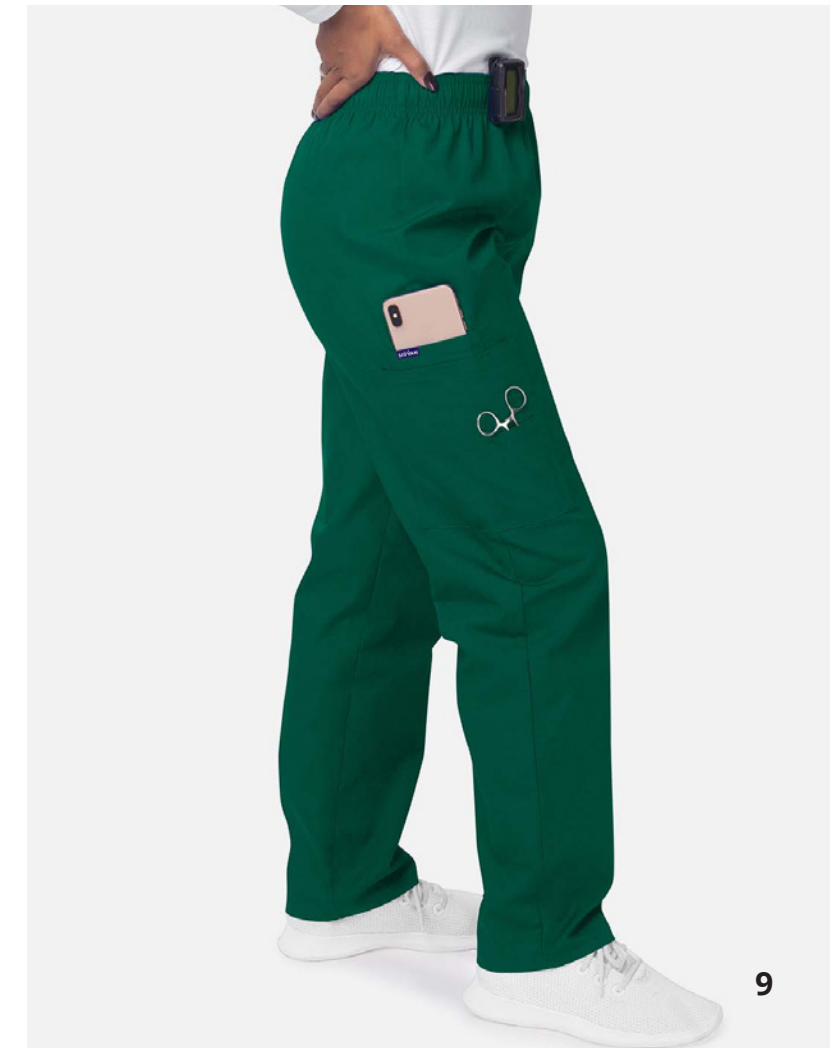


**PRODUCT DETAILS**

- Wide comfort full elastic waistband with inner drawstring
- 4 Pockets: 2 Large cargo pockets, cell phone pocket, and extra scissor pocket on right
- Natural-rise, tapered leg
- Inseam 30 inches

**AVAILABLE COLORS**

BLACK	CEIL BLUE
BURGUNDY	CHARCOAL
CARIBBEAN BLUE	HUNTER GREEN
WHITE	KHAKI
LAVENDER	NAVY
ROYAL BLUE	TEAL BLUE
PURPLE	MANDARIN ORANGE
SHERBET	



**COMFORT ELASTIC DRAWSTRING CARGO PANTS**

WOMEN'S

STYLE S8200

4 POCKETS

65% POLYESTER 35% COTTON, POPLIN





CLASSIC FIT

Sizes: XXS-5X

Model wearing size XS



### PRODUCT DETAILS

- Stitched round neckline
- Four-button snap front closure
- Long sleeves with rib-knit cuffs
- Two roomy patch pockets
- Center back length 29 inches in size M

### AVAILABLE COLORS

BLACK	CEIL BLUE
BURGUNDY	CHARCOAL
CARIBBEAN BLUE	HUNTER GREEN
WHITE	KHAKI
LAVENDER	NAVY
ROYAL BLUE	TEAL BLUE



## WOMEN'S WARM UP JACKET

WOMEN'S

STYLE S8306

2 POCKETS

65% POLYESTER 35% COTTON, POPLIN





CLASSIC FIT

Sizes: XXS-5X

Male model wearing size M  
Female model wearing size XS



### PRODUCT DETAILS

#### TOP

- V-neck tunic styling
- Two roomy lower patch pockets, Chest pocket with pen divider
- Side vents for easy movement
- Center back length 28 1/2 inches in size M

#### PANTS

- Comfort mesh drawstring closure
- Large cargo pocket on right-leg
- Back hip pocket
- Natural-rise, tapered leg
- Inseam 31 inches

#### AVAILABLE COLORS

BLACK	CEIL BLUE
BURGUNDY	CHARCOAL
CARIBBEAN BLUE	HUNTER GREEN
WHITE	KHAKI
LAVENDER	NAVY
ROYAL BLUE	TEAL BLUE
PURPLE	MANDARIN ORANGE
SHERBET	



## UNISEX V-NECK/DRAWSTRING PANT SCRUB SET

UNISEX    STYLE S8400    5 POCKETS

65% POLYESTER 35% COTTON, POPLIN





CLASSIC FIT

Sizes: XXS-3X

Model wearing size XS

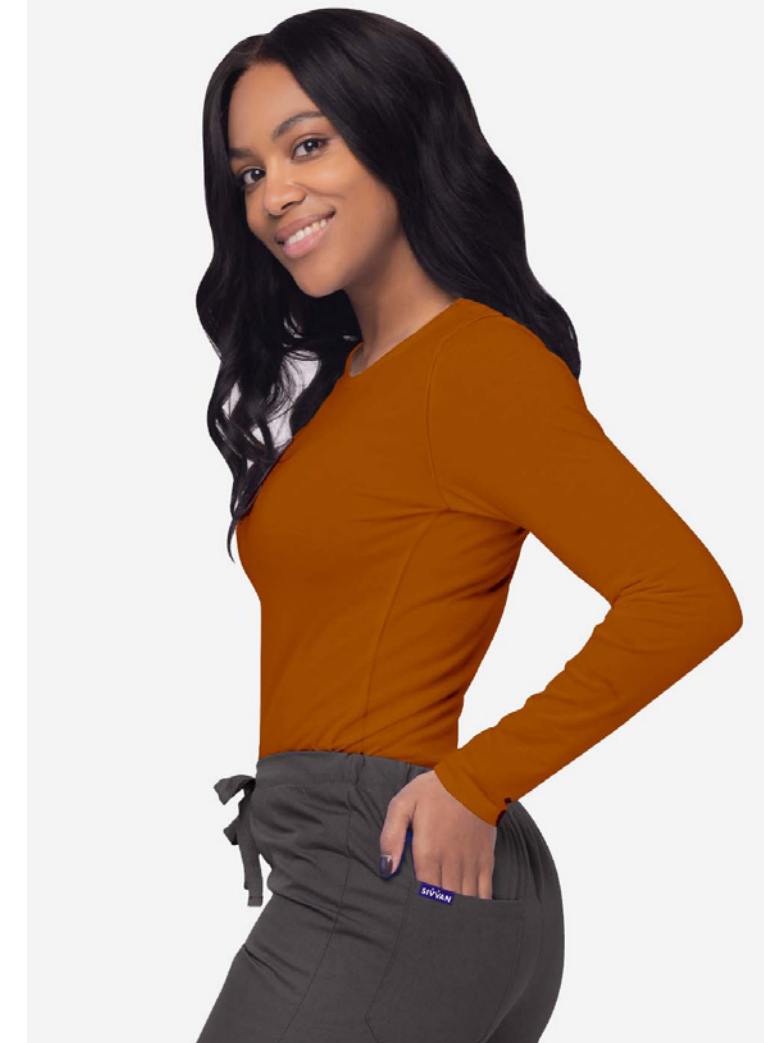


### PRODUCT DETAILS

- Double stitched crew neckline
- Tagless neck for comfort
- Center back length is 26 inches in size M

### AVAILABLE COLORS

BLACK	CHARCOAL
BURGUNDY	HUNTER GREEN
CARIBBEAN BLUE	KHAKI
WHITE	NAVY
LAVENDER	TEAL BLUE
ROYAL BLUE	CITRON
PURPLE	FUCHSIA
SHERBET	RED
EGGPLANT	BLUSH
SEA GLASS	SPEARMINT
AQUAMARINE	HEATHER CHARCOAL
OLIVE	NEON LIME GREEN
NEON ORANGE	NEON PINK
DARK MARL GREY	MARL GREY
CEIL BLUE	



### NEW COLORS

CARAMEL
COFFEE
MARTINI OLIVE
MOCHA QUARTZ
RED OCHRE
SPRING LEAF

### END OF SEASON

POOL BLUE
HEATHER EGGPLANT
HEATHER POOL BLUE
HEATHER ROYAL BLUE
HEATHER FUCHSIA
HEATHER PURPLE

## LONG SLEEVE COMFORT UNDERSCRUB TEE

WOMEN'S

STYLE S8500

STRETCH

65% POLYESTER 35% COTTON, DURABLE JERSEY KNIT





CLASSIC FIT

Sizes: R, X (large)

Models wearing size R



### PRODUCT DETAILS

- Self trim binding along edges
- Side ties and deep front pockets
- Center back length 27 1/4 inches

### AVAILABLE COLORS

BLACK	CEIL BLUE
BURGUNDY	CHARCOAL
CARIBBEAN BLUE	HUNTER GREEN
WHITE	KHAKI
LAVENDER	NAVY
ROYAL BLUE	TEAL BLUE
PURPLE	MANDARIN ORANGE
SHERBET	RED



## UNISEX COBBLER APRON

UNISEX

STYLE S8700

2 POCKETS

65% POLYESTER 35% COTTON, POPLIN



ENF OF SEASON



CLASSIC FIT

Sizes: XXS-5X

Model wearing size XS



PRODUCT DETAILS

TOP

- Mock wrap neck binding
- Empire midriff waist
- Side vents for ease of movement
- Two large slant pockets
- Center back length is 25 1/2 Inches in size M

PANTS

- Wide comfort full elastic waistband with inner drawstring
- 4 Pockets: 2 Large cargo pockets, cell phone pocket, and extra scissor pocket on right
- Natural-rise, tapered leg
- Inseam 30 Inches

AVAILABLE COLORS

BLACK	CEIL BLUE
BURGUNDY	CHARCOAL
CARIBBEAN BLUE	HUNTER GREEN
WHITE	KHAKI
LAVENDER	NAVY
ROYAL BLUE	TEAL BLUE
PURPLE	MANDARIN ORANGE
SHERBET	



MOCK WRAP TOP/CARGO PANT SCRUB SET

WOMEN'S

STYLE S8401

6 POCKETS

65% POLYESTER 35% COTTON, POPLIN



END OF SEASON



CLASSIC FIT

Sizes: XS-5X

Male model wearing size M  
Female model wearing size XS



PRODUCT DETAILS

- Comfort mesh drawstring closure
- Large cargo pocket on right-leg
- Back pocket
- Natural-rise, tapered leg
- Inseam 31 inches

AVAILABLE COLORS

BLACK	CEIL BLUE
BURGUNDY	CHARCOAL
ROYAL BLUE	HUNTER GREEN
WHITE	KHAKI
TEAL BLUE	NAVY



UNISEX DRAWSTRING PANTS

UNISEX    STYLE S8202    2 POCKETS

65% POLYESTER 35% COTTON, POPLIN



END OF SEASON



CLASSIC FIT

Sizes: XS-3X

Male model wearing size M



## MEN'S ZIPPERED SHORT SLEEVE JACKET

MEN'S

STYLE S8308

5 POCKETS

65% POLYESTER 35% COTTON, POPLIN



### PRODUCT DETAILS

- Collared neckline with short sleeves
- Front yoke and back midriff with pleats
- Zip front closure
- 5 Pockets: 2 large patch pockets doubled with 2 angled pockets and a chest pocket with pen divider
- Center back length 29 1/2 inches in size M

### AVAILABLE COLORS

BLACK

CEIL BLUE

BURGUNDY

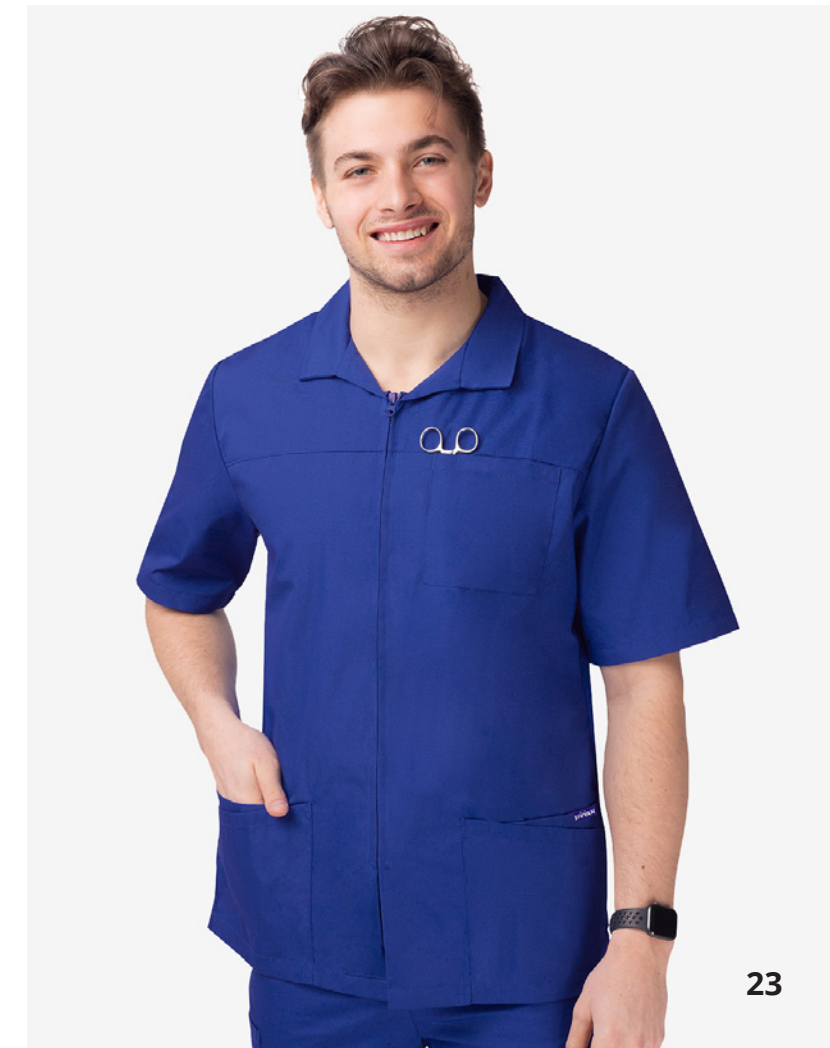
CHARCOAL

ROYAL BLUE

HUNTER GREEN

WHITE

NAVY





END OF SEASON

Male model wearing size M  
Female model wearing size XS



CLASSIC FIT

Sizes: XXS-5X



### PRODUCT DETAILS

- Long set-in sleeves
- 3-button front closure
- 3 Pockets: 1 chest pocket with pen divider and 2 large lower pockets
- Rounded edges bottom front detail
- Center back length 31 inches in size M

### AVAILABLE COLORS



## 31" UNISEX CONSULTATION COAT

UNISEX    STYLE S8800    3 POCKETS

65% POLYESTER 35% COTTON, POPLIN



END OF SEASON



CLASSIC FIT

Sizes: XXS-5X

Male model wearing size M  
Female model wearing size XS



### PRODUCT DETAILS

- 4-button front closure
- 3 Pockets: 2 large lower pockets and 1 chest pocket with pen divider
- Fashionable pleated back midriff
- Side hand vents for easy access
- Center back length 39 inches in size M

### AVAILABLE COLORS



## 39" UNISEX PROFESSIONAL LAB COAT

UNISEX    STYLE S8802    3 POCKETS

65% POLYESTER 35% COTTON, POPLIN



END OF SEASON



MODERN CLASSIC FIT

Sizes: XXS-5X

Model wearing size XS



PRODUCT DETAILS

- 4-button front closure
- Long set-in sleeves
- Rounded lapels and front princess seams
- Back slit for easy movement
- Back adjustable midriff belt
- 1 chest pocket and 2 large patch pockets
- Center back length 33 inches in size M

AVAILABLE COLORS

WHITE



33" WOMEN'S MODERN SLIM LAB COAT

WOMEN'S

STYLE S8804

3 POCKETS

65% POLYESTER 35% COTTON, POPLIN



# SIVVAN WOMEN'S SIZE CHART & FIT GUIDE

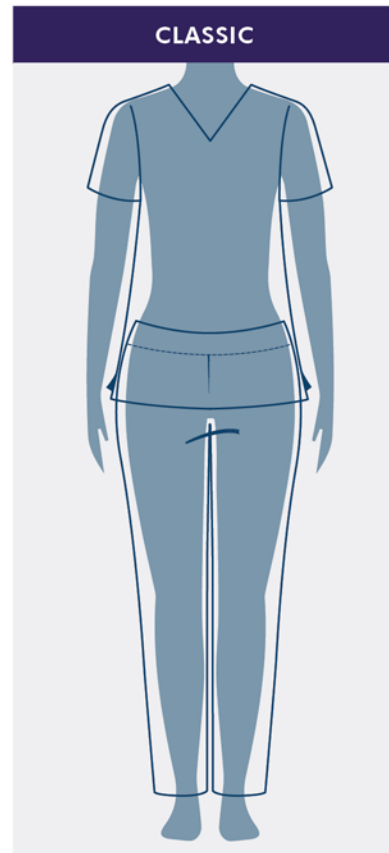


# SIVVAN MEN'S SIZE CHART & FIT GUIDE

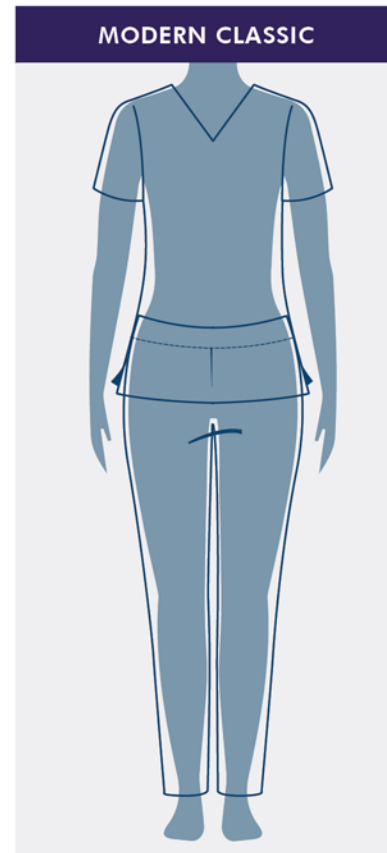


### HOW TO MEASURE

- BUST** Measure under your arms, around the fullest part of your bust.
- WAIST** Measure around the smallest part of your waist while loosely holding the tape measure.
- HIP** Measure around the fullest part of your hip while having your feet together.
- INSEAM** Measure the length from the crotch seam to the bottom of the leg along the inside of the pant.



Traditional roomy cut for maximum comfort.

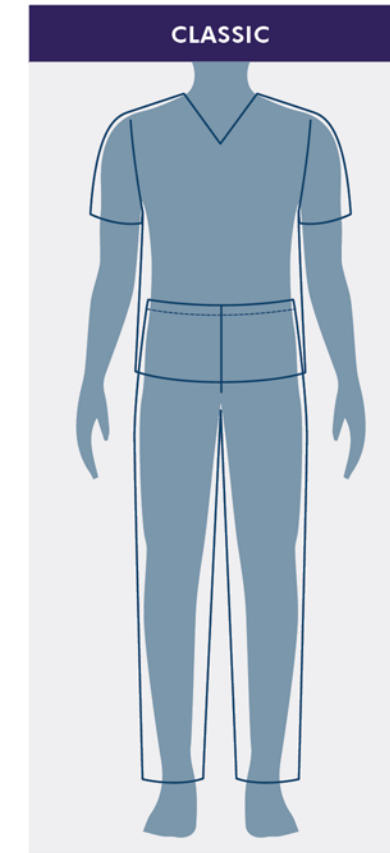


Fits closer to the body.

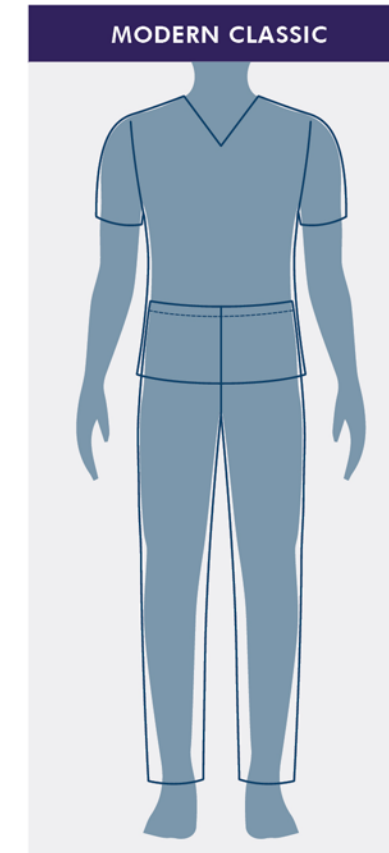


### HOW TO MEASURE

- CHEST** Measure under your arms, around the fullest part of your bust.
- WAIST** Measure around the smallest part of your waist while loosely holding the tape measure.
- HIP** Measure around the fullest part of your hip while having your feet together.
- INSEAM** Measure the length from the crotch seam to the bottom of the leg along the inside of the pant.



Traditional roomy cut for maximum comfort.



Fits closer to the body.

ALL MEASUREMENTS COME IN INCHES

WOMEN'S SIZES	CONVERSION	BUST	WAIST	HIP
XXS	0	31-32	23-24	33-34
XS	2/4	33-34	25-26	35-36
S	6/8	35-36	27-28	37-38
M	10/12	37-39	29-31	39-41
L	14/16	40-43	32-35	42-45
XL	18/20	44-47	36-39	46-49
XXL	22/24	48-51	40-43	50-53
3XL	26/28	52-55	44-47	54-57
4XL	30/32	56-59	48-51	58-61
5XL	34/36	60-63	52-55	62-65

#### REGULAR INSEAM: 30 – 31½

If one of your measurements is borderline between two sizes, order the smaller size for a tighter fit or larger for a looser fit.

If your measurements for hips and waist correspond to two different suggested sizes, order the one indicated by your hip measurements

ALL MEASUREMENTS COME IN INCHES

MEN'S SIZES	CONVERSION	CHEST	WAIST	HIP
XXS	30	29-31	21-23	29-31
XS	32/34	32-34	24-26	32-34
S	36/38	35-37	27-29	35-37
M	40/42	38-40	30-32	38-40
L	44/46	41-44	33-36	41-44
XL	48/50	45-48	37-40	45-48
XXL	52/54	49-52	41-44	49-52
3XL	56/58	53-56	45-48	53-56
4XL	60/62	57-60	49-52	57-60
5XL	64	61-64	53-56	61-64

#### INSEAM: 31-32

If one of your measurements is borderline between two sizes, order the smaller size for a tighter fit or larger for a looser fit.

If your measurements for hips and waist correspond to two different suggested sizes, order the one indicated by your hip measurements.





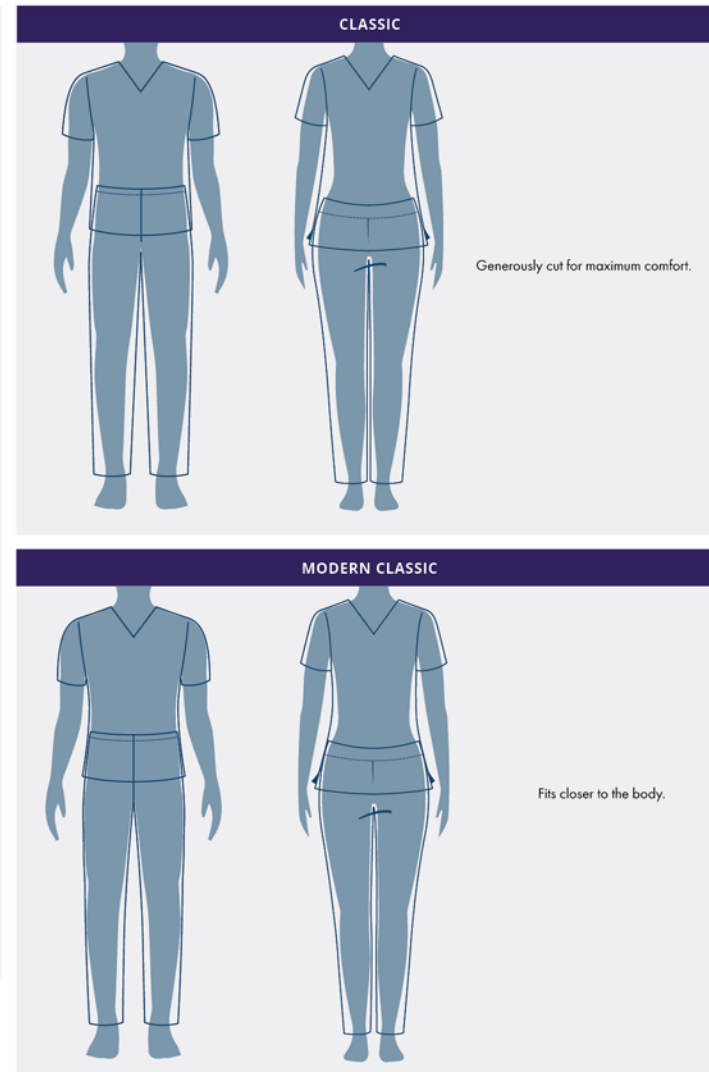
**HOW TO MEASURE**

**CHEST**  
Measure under your arms, around the fullest part of your bust.

**WAIST**  
Measure around the smallest part of your waist while loosely holding the tape measure.

**HIP**  
Measure around the fullest part of your hip while having your feet together.

**INSEAM**  
Measure the length from the crotch seam to the bottom of the leg along the inside of the pant.



ALL MEASUREMENTS COME IN INCHES

MEN'S SIZES	CONVERSION	CHEST	WAIST	HIP
XXS	30	29-31	21-23	29-31
XS	32/34	32-34	24-26	32-34
S	36/38	35-37	27-29	35-37
M	40/42	38-40	30-32	38-40
L	44/46	41-44	33-36	41-44
XL	48/50	45-48	37-40	45-48
XXL	52/54	49-52	41-44	49-52
3XL	56/58	53-56	45-48	53-56
4XL	60/62	57-60	49-52	57-60
5XL	64	61-64	53-56	61-64

**INSEAM: 31-32**

If one of your measurements is borderline between two sizes, order the smaller size for a tighter fit or larger for a looser fit.

If your measurements for hips and waist correspond to two different suggested sizes, order the one indicated by your hip measurements.



**DURABLE AND NONELASTIC BASICS.  
TIMELESS FUNCTIONAL DESIGNS.**

**65% POLYESTER 35% COTTON, POPLIN**

**CARE INSTRUCTIONS**



**Machine Wash Cold  
With Like Colors  
Use Non-chlorine Bleach  
If Necessary  
Tumble Dry Low  
Iron Low  
Do Not Iron Directly Over Label**



# SIVVAN

DURABLE BASICS



## ADAR

[www.adaruniforms.com](http://www.adaruniforms.com)

Sivvan products are produced by Adar Uniforms.

[info@adarmedicaluniforms.com](mailto:info@adarmedicaluniforms.com) | P. 866.570.6964

24 Division Place, Brooklyn, NY 11222

FOLLOW US!

[@adarmeduniforms](#)

