



PRO

PREMIUM DETAILS

&

PRO

Heather

LUXURIOUSLY SOFT

ADAR

JANUARY 2023

TABLE OF CONTENT

FABRIC DETAILS

SOLID.....	6
HEATHER.....	24

COLLECTION DETAILS8

INTRODUCING PRO HEATHER.....22

P4210

SOLID.....	10
HEATHER.....	26

P4212

SOLID.....	12
HEATHER.....	28

P7002

SOLID.....	14
HEATHER.....	30

P4100

SOLID.....	16
HEATHER.....	32

P7104

SOLID.....	18
HEATHER.....	34

P710220

440036

P940038

P950040

P960042

SIZE CHART & FIT GUIDE.....46

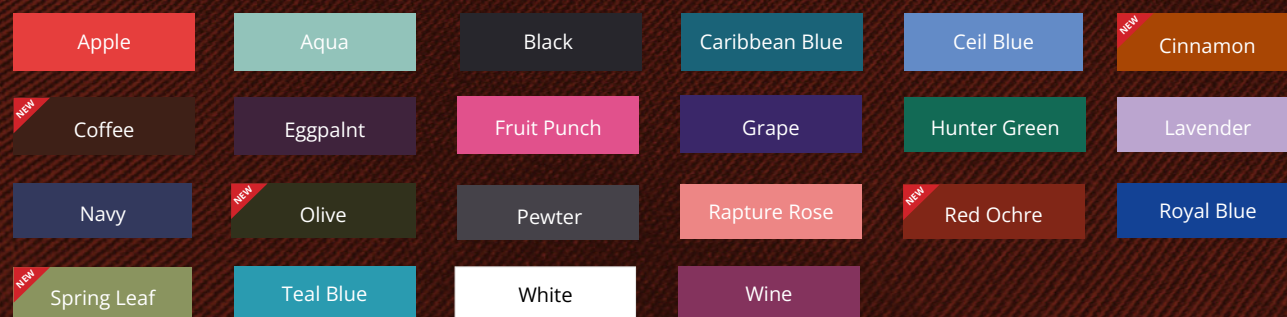


PRO

EXPERIENCE CUTTING-EDGE COMFORT WITH OUR
HIGH-PERFORMANCE MULTI-STRETCH AND LUXURIOUSLY SOFT FABRIC.



AVAILABLE IN 22 AMAZING COLORS



PERFORMANCE TWILL - 74% POLYESTER, 23% RAYON, 3% SPANDEX



COLLECTION DETAILS

Our Pro and Pro Heather collections feature sophisticated details that enhance the designs and elevate your scrubs so you stand out. With our signature branded features such as the zippers, snaps and drawstrings, each style is guaranteed to look chic and modern. Additionally our Pro collection features the woven label on each style and our Pro Heather collection features the embroidered icon on our tops.

Both collections feature our tag-less silver heat seal for maximum comfort.



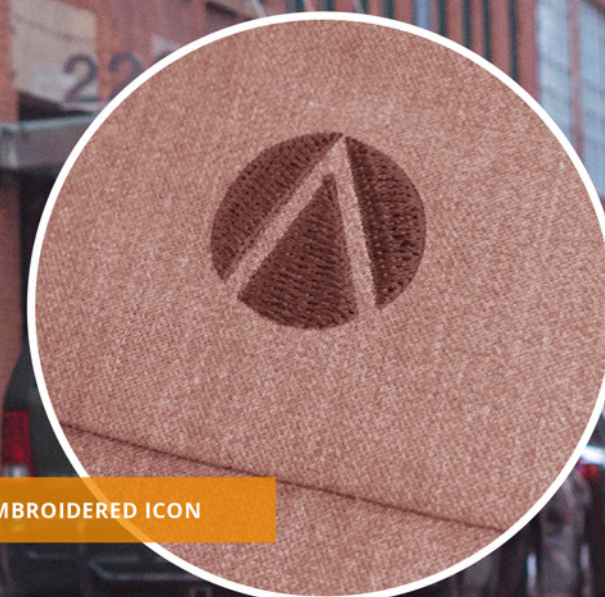
TAGLESS HEAT SEAL



BRANDED BUTTONS



BRANDED ZIPPER



EMBROIDERED ICON



BRANDED DRAWSTRING



WOVEN LABEL



SWEETHEART V-NECK SCRUB TOP

WOMEN'S | P4210

TAILORED FIT



curved v-neckline features self trim binding

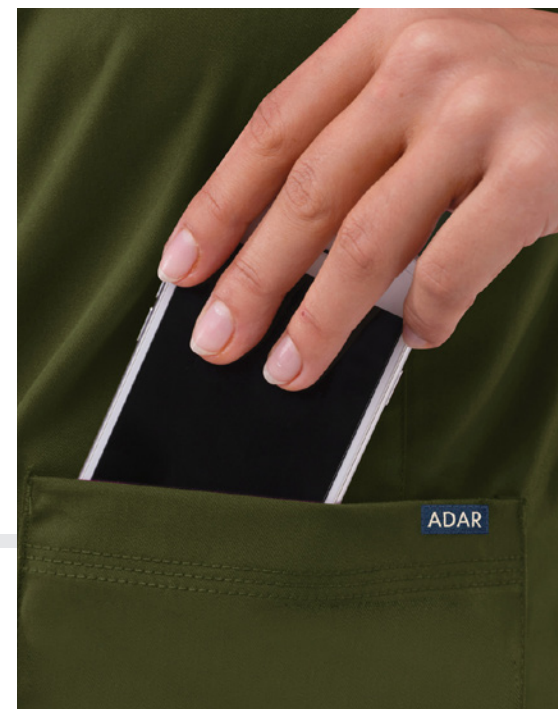
triple stitching on entire garment

stitched front princess seams

curve cut front patch pockets

super soft stretch fabric for limitless motion

side vents for easy movement and comfortable fit



PRODUCT DESCRIPTION

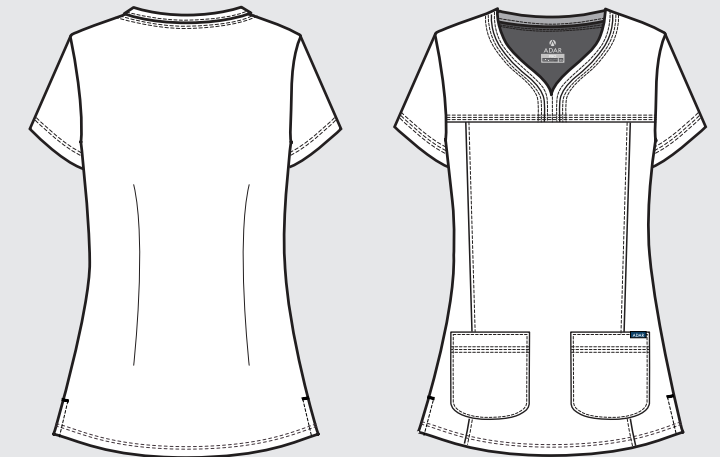
This charming sweetheart v-neck scrub top is perfect for those who are fond of detail, but still want to keep their look understated. Self trim binds the gracefully curved v-neckline and triple stitching along the edge extends to the yoked styling, trimming sleeves and curved pockets alike.

Center back length is 25 1/2 inches in size S.

Performance Twill - 74% Polyester, 23% Rayon, 3% Spandex

AVAILABLE SIZES

XXS, XS, S, M, L, XL, 2X, 3X



AVAILABLE COLORS

Core Colors

Black	Ceil Blue	Navy	Pewter
Royal Blue	Teal Blue	White	Wine

Fashion Colors

Caribbean Blue	NEW Cinnamon	NEW Coffee	Eggplant
Hunter Green	NEW Olive	NEW Red Ochre	NEW Spring Leaf

End of season

Aqua	Fruit Punch	Grape	Lavender
------	-------------	-------	----------

MODEL WEARS SIZE XS
COLOR: OLIVE

WRINKLE-RESISTANT
 ODOR-RESISTANT
 STRETCH FABRIC
 EASY CARE

ELEVATED V-NECK SCRUB TOP

WOMEN'S | P4212

TAILORED FIT



elevated double stitched v-neckline

super soft stretch fabric for limitless motion

fully curved princess seams

2 large cargo pockets on left and right sides

mini patch pocket overlay with branded zipper detail

MODEL WEARS SIZE XS
COLOR: COFFEE



PRODUCT DESCRIPTION

An elevated version of the classic v-neck scrub top. Beautiful details such as a double stitched neckline, back and front curved princess seams, shaped patch pockets and super soft stretch fabric truly make this scrub top a crowd favorite. Iconic Adar zipper detail adorns the front pocket. Features such as double stitching with tonal thread and odor/wrinkle resistant fabric make it just as durable as it is beautiful.

Center back length is 25 1/2 inches in size S.

Performance Twill - 74% Polyester, 23% Rayon, 3% Spandex

AVAILABLE SIZES

XXS, XS, S, M, L, XL, 2X, 3X



AVAILABLE COLORS

Core Colors

Black	Ceil Blue	Navy	Pewter
Royal Blue	Teal Blue	White	Wine

Fashion Colors

Apple	Caribbean Blue	NEW Cinnamon	NEW Coffee
Eggplant	Hunter Green	NEW Olive	NEW Red Ochre
Rapture Rose	NEW Spring Leaf		

End of season

Aqua	Fruit Punch	Grape	Lavender
------	-------------	-------	----------



WRINKLE-RESISTANT



ODOR-RESISTANT



STRETCH FABRIC



EASY CARE

MODERN V-NECK SCRUB TOP

WOMEN'S | P7002

TAILORED FIT



super soft stretch fabric and forward shoulder design for a comfortable and fashionable fit

discreet on-seam ID slits

flattering princess seams

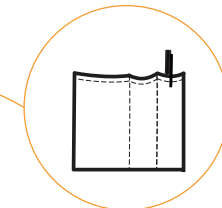
2 double layered angled pockets



interior device and pen pockets



sleeve side view



interior device and pen pockets

shirt tail hem detail



PRODUCT DESCRIPTION

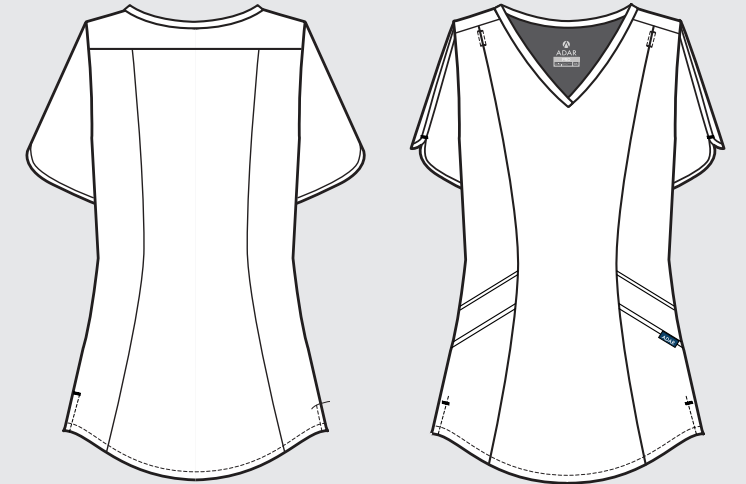
A sleek staple with flattering fit and supremely functional details, this v-neck scrub top looks professional and trendy. Our scrub top stands out with features such as odor and wrinkle resistant fabric. This powerhouse top also has the most pockets in the Pro Collection. Created with super soft fabric to get you through every shift.

Center back length is 25 1/2 inches in size S.

Performance Twill - 74% Polyester, 23% Rayon, 3% Spandex

AVAILABLE SIZES

XXS, XS, S, M, L, XL, 2X, 3X



AVAILABLE COLORS

Core Colors

Black	Ceil Blue	Navy	Pewter
Royal Blue	Teal Blue	White	Wine

Fashion Colors

Apple	Carribbean Blue	NEW Cinnamon	NEW Coffee
Eggplant	Hunter Green	NEW Olive	NEW Red Ochre
Rapture Rose	NEW Spring Leaf		

End of season

Aqua	Fruit Punch	Grape	Lavender
------	-------------	-------	----------

MODEL WEARS SIZE XS
COLOR: CINNAMON

WRINKLE-RESISTANT
 ODOR-RESISTANT
 STRETCH FABRIC
 EASY CARE



double belt loops in front and back

flat front waistband

2 deep front slash pockets

outer stretch drawstring

1 front snap button pocket

shaped patch pockets with zipper detail

6 pockets throughout

2 back snap button pockets

slim fit tapered leg



side vents for easy movement and comfortable fit



SLIM FIT 6 POCKET PANT

WOMEN'S | P4100

PRODUCT INFO

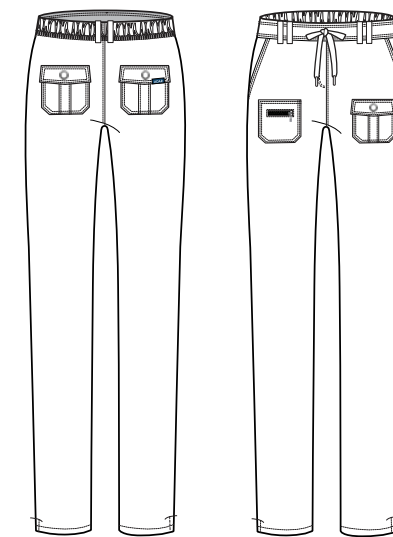
REGULAR: Leg inseam is 31 1/2 inches. Leg opening for size S is 7.5 inches. Available Sizes: XXS-3X

PETITE: Leg inseam is 29 1/2 inches. Leg opening for size S is 7.5 inches. Available Sizes: XXS-3X

TALL: Leg inseam is 33 1/2 inches. Leg opening for size S is 7.5 inches. Available Sizes: XS-3X

PERFORMANCE TWILL

74% Polyester, 23% Rayon, 3% Spandex



 6 POCKETS TOTAL

ALL COLORS AVAILABLE IN REGULAR, PETITE & TALL

Core Colors

Black	Ceil Blue	Navy	Pewter
Royal Blue	Teal Blue	White	Wine

Fashion Colors

Apple	Carribbean Blue	NEW Cinnamon	NEW Coffee
Eggplant	Hunter Green	NEW Olive	NEW Red Ochre
Rapture Rose	NEW Spring Leaf		

End of season

Aqua	Fruit Punch	Grape	Lavender
------	-------------	-------	----------

PRO

TAILORED FIT

MODEL WEARS SIZE XS
COLOR: SPRING LEAF



WRINKLE-RESISTANT



ODOR-RESISTANT



STRETCH FABRIC



EASY CARE

super soft stretch outer drawstring

lie flat elastic yoga waistband

2 roomy patch pockets

leg zip cargo pocket

4 total pockets throughout
1 curved back pocket

skinny fit jogger leg

duel hem: Flat front hem, cuffed ribbed back hem

ULTIMATE YOGA JOGGER PANT

WOMEN'S | P7104

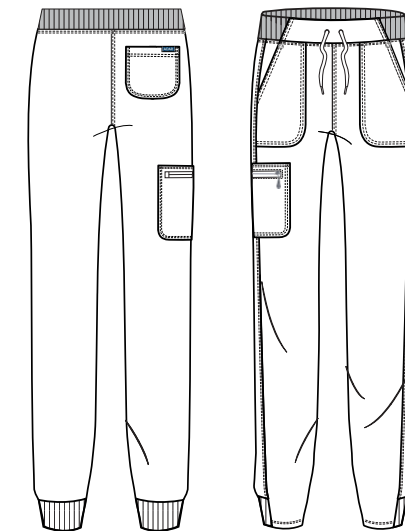
PRODUCT INFO

REGULAR: Leg inseam is 29 inches. Leg opening for size S is 5 inches. Available Sizes: XXS-3X

TALL: Leg inseam is 31 1/2 inches. Leg opening for size S is 5 inches. Available Sizes: XS-3X

PERFORMANCE TWILL

74% Polyester, 23% Rayon, 3% Spandex



4 POCKETS TOTAL

PRO

TAILORED FIT

MODEL WEARS SIZE XS
COLOR: RED OCHRE



WRINKLE-RESISTANT



ODOR-RESISTANT



STRETCH FABRIC



EASY CARE

ALL COLORS AVAILABLE IN REGULAR & TALL

Core Colors

Black	Ceil Blue	Navy	Pewter
Royal Blue	Teal Blue	White	Wine

Fashion Colors

Apple	Carribbean Blue	NEW Cinnamon	NEW Coffee
Eggplant	Hunter Green	NEW Olive	NEW Red Ochre
Rapture Rose	NEW Spring Leaf		

End of season

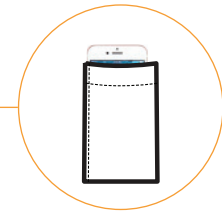
Aqua	Fruit Punch	Grape	Lavender
------	-------------	-------	----------

lie flat interlock knit yoga waistband

soft stretch interior drawstring

skinny leg fit

side vents for easy movement and comfortable fit



5 pockets throughout: 2 deep front slash pockets, 1 small internal front pocket and 2 curved back pockets



SKINNY LEG YOGA PANT

WOMEN'S | P7102

PRODUCT INFO

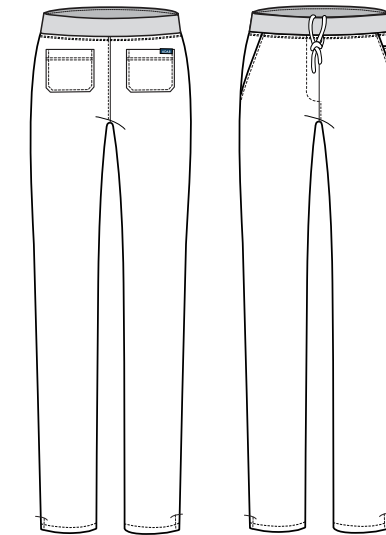
REGULAR: Leg inseam is 30 inches. Leg opening for size S is 7 inches. Available Sizes: XXS-3X

PETITE: Leg inseam is 27 1/2 inches. Leg opening for size S is 7 inches. Available Sizes: XXS-3X

TALL: Leg inseam is 32 1/2 inches. Leg opening for size S is 7 inches. Available Sizes: XS-3X

PERFORMANCE TWILL

74% Polyester, 23% Rayon, 3% Spandex

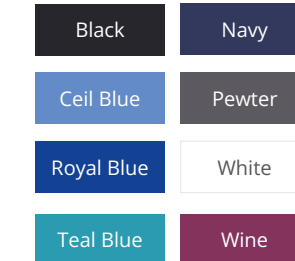


5 POCKETS TOTAL

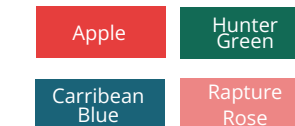
AVAILABLE COLORS

REGULAR

Core Colors



Fashion Colors

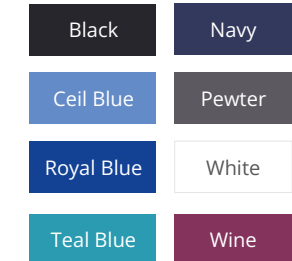


End of season



PETITE

Core Colors



Fashion Colors

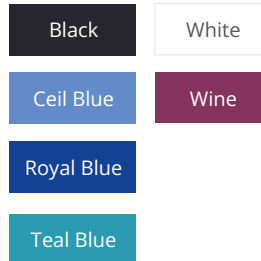


End of season



TALL

Core Colors



Fashion Colors



End of season



PRO

TAILORED FIT

MODEL WEARS SIZE XS
COLOR: CARRIBEAN



WRINKLE-RESISTANT



ODOR-RESISTANT



STRETCH FABRIC



EASY CARE

PRO *Heather*

Our Pro Heather collection is designed for the ultimate fashion forward professional. Each style has unique modern design features and is crafted from our premium heather fabric. Next-level softness, multi-stretch fabric and ultimate comfort all in one. This collection is designed to make you stand out.



PRO Heather

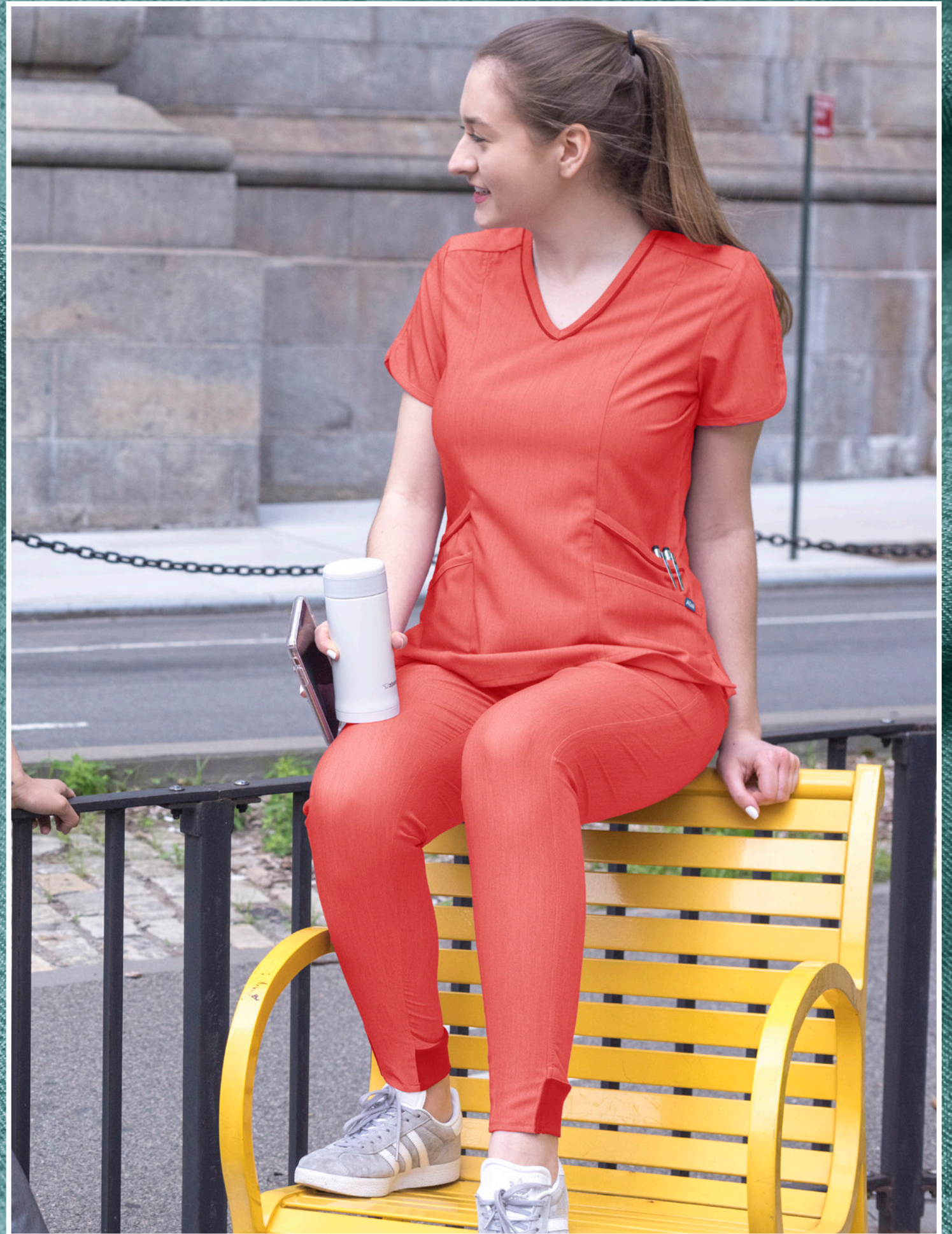
EXPERIENCE CUTTING-EDGE COMFORT WITH OUR HIGH-PERFORMANCE MULTI-STRETCH AND LUXURIOUSLY SOFT FABRIC.



AVAILABLE IN 9 AMAZING COLORS



PERFORMANCE TWILL - 72% POLYESTER, 22% RAYON, 6% SPANDEX



SWEETHEART V-NECK SCRUB TOP

WOMEN'S | P4210

TAILORED FIT



CENTER BACK LENGTH
25 1/2 inches in size S.

PERFORMANCE TWILL
72% Polyester,
22% Rayon,
6% Spandex

AVAILABLE SIZES
XXS - 3X

MODEL WEARS SIZE XS | COLOR: HEATHER HUNTER GREEN

End of season

- NEW HEATHER APPLE
- NEW HEATHER COFFEE
- HEATHER FRENCH BLUE
- HEATHER GREY
- NEW HEATHER HUNTER
- HEATHER OLIVE
- HEATHER WINE
- HEATHER GRAPE
- HEATHER NAVY

26 SPANDEX STRETCH LUXURIOUSLY SOFT WRINKLE-RESISTANT SOIL RELEASE

ELEVATED V-NECK SCRUB TOP

WOMEN'S | P4212

TAILORED FIT

elevated double stitched v-neckline

fully curved princess seams

mini patch pocket overlay with branded zipper detail

super soft stretch fabric for limitless motion

2 large cargo pockets on left and right sides

side vents for easy movement and comfortable fit



CENTER BACK LENGTH
25 1/2 inches in size S.

PERFORMANCE TWILL
72% Polyester,
22% Rayon,
6% Spandex

AVAILABLE SIZES
XXS - 3X

MODEL WEARS SIZE XS | COLOR: HEATHER APPLE

End of season

- NEW HEATHER APPLE
- NEW HEATHER COFFEE
- HEATHER FRENCH BLUE
- HEATHER GREY
- NEW HEATHER HUNTER
- HEATHER OLIVE
- HEATHER WINE
- HEATHER GRAPE
- HEATHER NAVY

- SPANDEX STRETCH
- LUXURIOUSLY SOFT
- WRINKLE-RESISTANT
- SOIL RELEASE

MODERN V-NECK SCRUB TOP

WOMEN'S | P7002

TAILORED FIT

discreet on-seam ID slits

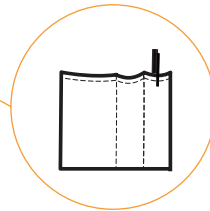
super soft stretch fabric and forward shoulder design for a comfortable and fashionable fit

flattering princess seams

2 double layered angled pockets



interior device and pen pockets



interior device and pen pockets

side vents for easy movement and comfortable fit

shirt tail hem detail



CENTER BACK LENGTH
25 1/2 inches in size S.

PERFORMANCE TWILL
72% Polyester,
22% Rayon,
6% Spandex

AVAILABLE SIZES
XXS - 3X

MODEL WEARS SIZE XS | COLOR: HEATHER COFFEE

End of season

- NEW HEATHER APPLE
- NEW HEATHER COFFEE
- HEATHER FRENCH BLUE
- HEATHER GREY
- NEW HEATHER HUNTER
- HEATHER OLIVE
- HEATHER WINE
- HEATHER GRAPE
- HEATHER NAVY

- SPANDEX STRETCH
- LUXURIOUSLY SOFT
- WRINKLE-RESISTANT
- SOIL RELEASE



double belt loops in front and back

flat front waistband

2 deep front slash pockets

outer stretch drawstring

1 front snap button pocket

shaped patch pockets with zipper detail

6 pockets throughout

2 back snap button pockets

slim fit tapered leg



side vents for easy movement and comfortable fit



MODEL WEARS SIZE XS | COLOR: HEATHER GREY

PRO
Heather

SLIM FIT 6 POCKET PANT

WOMEN'S | P4100

TAILORED FIT

HEATHER FRENCH BLUE

HEATHER WINE

HEATHER OLIVE

HEATHER GREY

End of season

HEATHER GRAPE

HEATHER NAVY



SPANDEX STRETCH



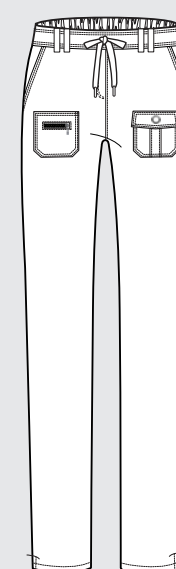
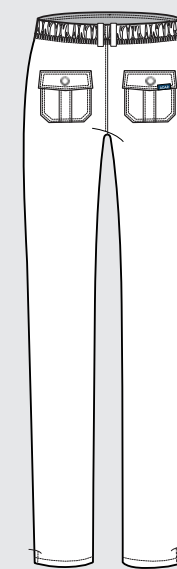
LUXURIOUSLY SOFT



WRINKLE-RESISTANT



SOIL RELEASE



REGULAR: Leg inseam is 31 1/2 inches. Leg opening for size S is 7.5 inches. Available Sizes: XXS-3X

PETITE: Leg inseam is 29 1/2 inches. Leg opening for size S is 7.5 inches. Available Sizes: XXS-3X

TALL: Leg inseam is 33 1/2 inches. Leg opening for size S is 7.5 inches. Available Sizes: XS-3X

PERFORMANCE TWILL
72% Polyester, 22% Rayon, 6% Spandex

6 POCKETS TOTAL

super soft stretch
outer drawstring

leg zip cargo pocket

4 total pockets throughout
1 curved back pocket

lie flat elastic
yoga waistband

2 roomy patch
pockets

skinny fit jogger leg

duel hem: Flat front hem,
cuffed ribbed back hem



MODEL WEARS SIZE XS | COLOR: HEATHER FRENCH BLUE

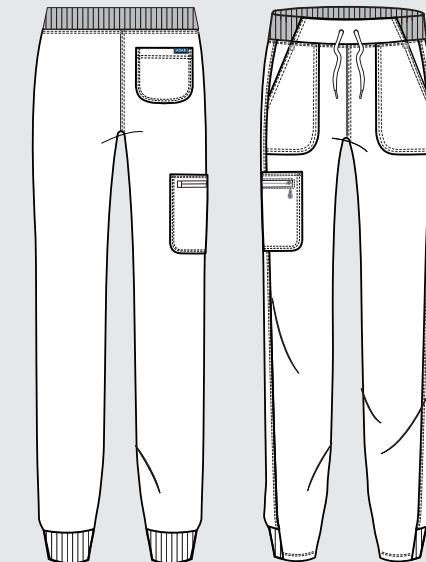
PRO
Heather

TAILORED FIT

ULTIMATE YOGA JOGGER PANT

WOMEN'S | P7104

End of season



REGULAR: Leg inseam is 29 inches.
Leg opening for size S is 5 inches.
Available Sizes: XXS-3X

TALL: Leg inseam is 31 1/2 inches.
Leg opening for size S is 5 inches.
Available Sizes: XS-3X

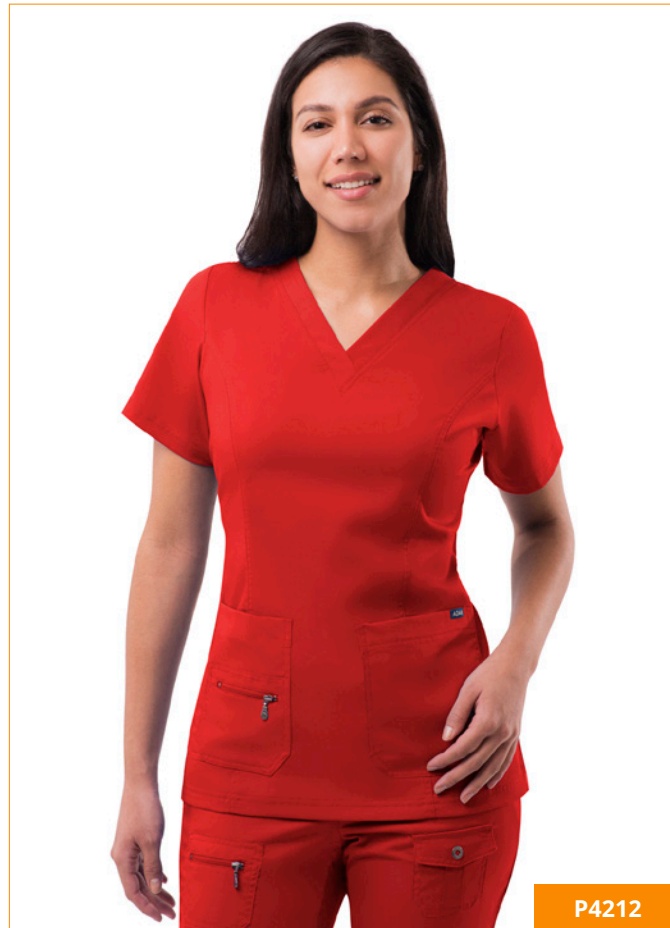
PERFORMANCE TWILL
72% Polyester, 22% Rayon, 6% Spandex

4 POCKETS TOTAL

TAILORED FIT

BREAKTHROUGH PLUS SCRUB SET

WOMEN'S | 4400



P4212

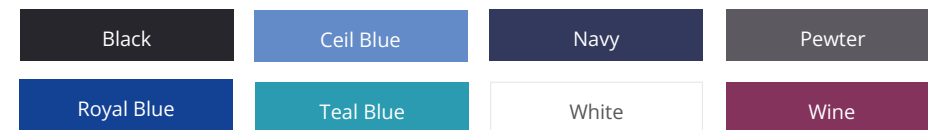


P4100

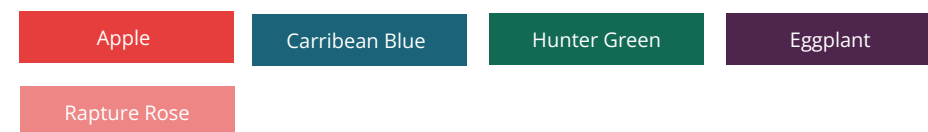
PRO

AVAILABLE COLORS

Core Colors



Fashion Colors



End of season



PRO Heather



TOP CENTER BACK LENGTH
25 1/2 Inches in Size S.

BOTTOM
Leg inseam is 31 1/2 Inches.
Leg opening for size S is 7.5 Inches.

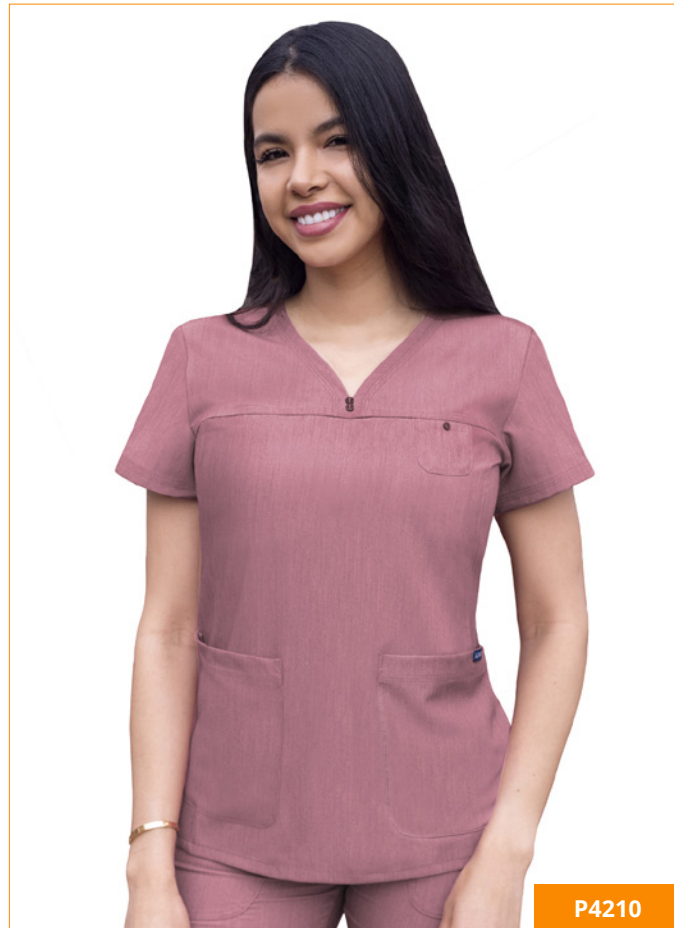
AVAILABLE SIZES
XXS - 3X

MODEL WEARS SIZE XS | COLOR: APPLE 37

TAILORED FIT

MOVEMENT BOOSTER JOGGER SCRUB SET

WOMEN'S | P9400



P4210



P7104



TOP CENTER BACK LENGTH
25 1/2 Inches in Size S.

BOTTOM
Leg inseam is 29 Inches.
Leg opening for size S is 5 inches.

AVAILABLE SIZES
XXS - 3X

PRO

AVAILABLE COLORS

Core Colors

Black	Ceil Blue	Navy	Pewter
Royal Blue	Teal Blue	White	Wine

Fashion Colors

Apple	Caribbean Blue	NEW Cinnamon	NEW Coffee
Eggplant	Hunter Green	NEW Olive	NEW Red Ochre
Rapture Rose	NEW Spring Leaf		

End of season

Aqua	Fruit Punch	Grape	Lavender
------	-------------	-------	----------

PRO Heather

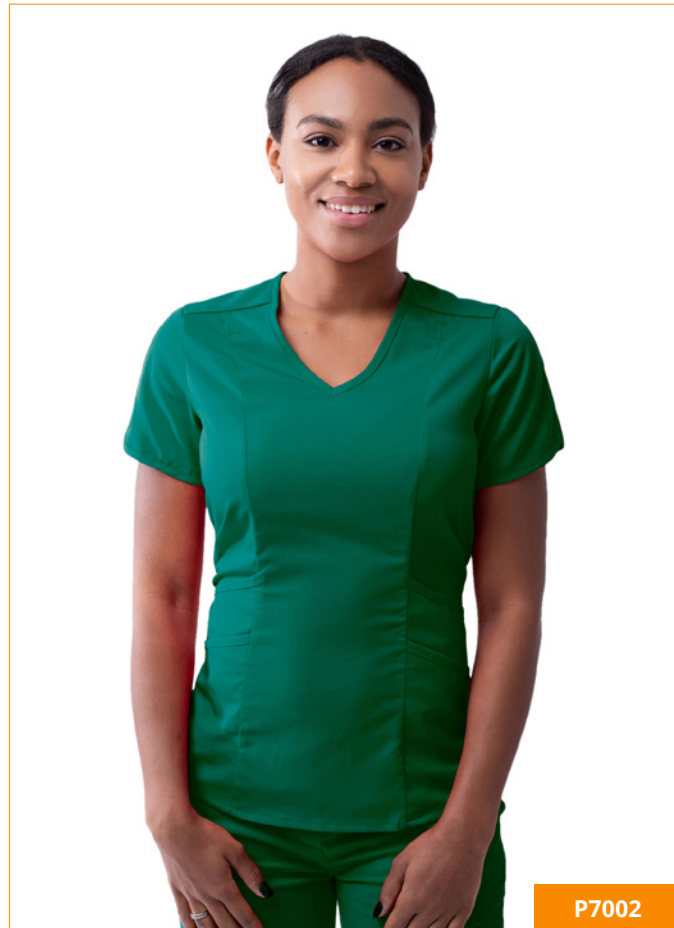
NEW HEATHER APPLE	NEW HEATHER COFFEE	HEATHER FRENCH BLUE	HEATHER GREY	NEW HEATHER HUNTER	HEATHER OLIVE	HEATHER WINE	End of season HEATHER GRAPE	HEATHER NAVY
-------------------	--------------------	---------------------	--------------	--------------------	---------------	--------------	-----------------------------	--------------

MODEL WEARS SIZE S | COLOR: HEATHER WINE 39

TAILORED FIT

MODERN ATHLETIC JOGGER SCRUB SET

WOMEN'S | P9500



P7002



P7104



TOP CENTER BACK LENGTH
25 1/2 Inches in Size S.

BOTTOM
Leg inseam is 29 Inches.
Leg opening for size S is 5 inches.

AVAILABLE SIZES
XXS - 3X

PRO

AVAILABLE COLORS

Core Colors

Black	Ceil Blue	Navy	Pewter
Royal Blue	Teal Blue	White	Wine

Fashion Colors

Apple	Caribbean Blue	NEW Cinnamon	NEW Coffee
Eggplant	Hunter Green	NEW Olive	NEW Red Ochre
Rapture Rose	NEW Spring Leaf		

End of season

Aqua	Fruit Punch	Grape	Lavender
------	-------------	-------	----------

PRO Heather

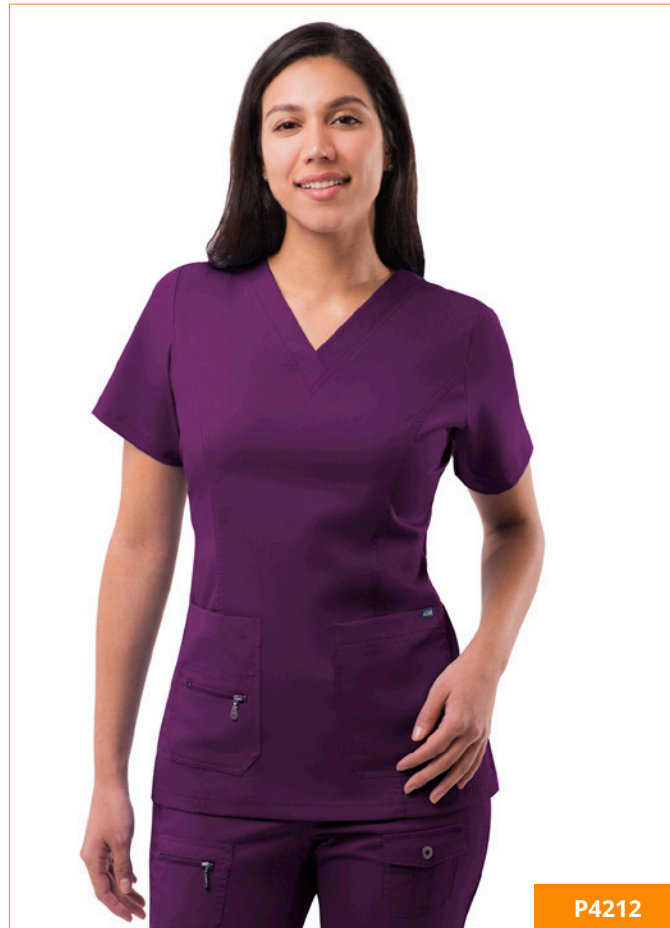
NEW HEATHER APPLE	NEW HEATHER COFFEE	HEATHER FRENCH BLUE	HEATHER GREY	NEW HEATHER HUNTER	HEATHER OLIVE	HEATHER WINE	End of season HEATHER GRAPE	HEATHER NAVY
--------------------------	---------------------------	---------------------	--------------	---------------------------	---------------	--------------	------------------------------------	--------------

MODEL WEARS SIZE S | COLOR: HUNTER GREEN

TAILORED FIT

WOMEN'S FLAWLESS PLUS SCRUB SET

WOMEN'S | P9600



P4212



P7104



TOP CENTER BACK LENGTH
25 1/2 Inches in Size S.

BOTTOM
Leg inseam is 29 Inches.
Leg opening for size S is 5 inches.

AVAILABLE SIZES
XXS - 3X

PRO

AVAILABLE COLORS

Core Colors

Black	Ceil Blue	Navy	Pewter
Royal Blue	Teal Blue	White	Wine

Fashion Colors

Apple	Caribbean Blue	NEW Cinnamon	NEW Coffee
Eggplant	Hunter Green	NEW Olive	NEW Red Ochre
Rapture Rose	NEW Spring Leaf		

End of season

Aqua	Fruit Punch	Grape	Lavender
------	-------------	-------	----------

PRO Heather

NEW HEATHER APPLE	NEW HEATHER COFFEE	HEATHER FRENCH BLUE	HEATHER GREY	NEW HEATHER HUNTER	HEATHER OLIVE	HEATHER WINE	End of season HEATHER GRAPE	HEATHER NAVY
-------------------	--------------------	---------------------	--------------	--------------------	---------------	--------------	-----------------------------	--------------

MODEL WEARS SIZE S | COLOR: EGGPLANT

INDULGE IN OUR MUST-HAVE
COLLECTION

our performance twill fabric
made scrubs will move, bend
and twist with you

dart and princess
seams add to the overall
tailored fit

wrinkle and odor resistant
fabric take these super soft
scrubs up a notch

pants sit right below the
natural waist

Our Pro and Pro Heather collections are
designed to fit closer to the body,
hug your curves and flatter your figure.
These styles have modern cuts and
stitching to enhance shape and style.

ADAR WOMEN'S SIZE CHART & FIT GUIDE



Our Collections & How They Fit

ADDITION

Contemporary Fit

PRO & PRO *Heather*

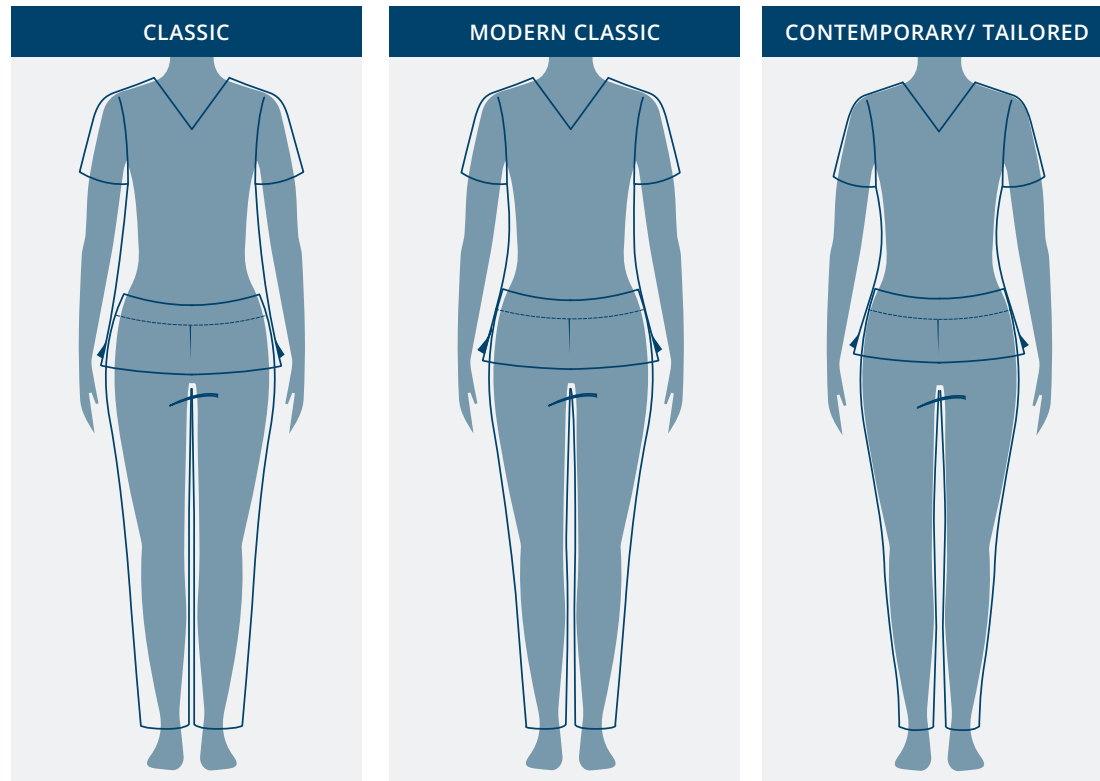
Tailored Fit

UNIVERSAL

Classic Fit
Modern Classic Fit

UNIVERSAL STRETCH

Modern Classic Fit
Contemporary Fit



Traditional roomy cut for maximum comfort.

Fits closer to the body.

Contoured to hug your curves.

ALL MEASUREMENTS COME IN INCHES

WOMEN'S SIZES	CONVERSION	BUST	WAIST	HIP
XXS	0	31-32	23-24	33-34
XS	2/4	33-34	25-26	35-36
S	6/8	35-36	27-28	37-38
M	10/12	37-39	29-31	39-41
L	14/16	40-43	32-35	42-45
XL	18/20	44-47	36-39	46-49
XXL	22/24	48-51	40-43	50-53
3XL	26/28	52-55	44-47	54-57
4XL	30/32	56-59	48-51	58-61
5XL	34/36	60-63	52-55	62-65

REGULAR INSEAM: 30 - 31½

PETITE INSEAM: 27½ - 29½

TALL INSEAM: 32½ - 33½

If one of your measurements is borderline between two sizes, order the smaller size for a tighter fit or larger for a looser fit.

If your measurements for hips and waist correspond to two different suggested sizes, order the one indicated by your hip measurements.



HOW TO MEASURE

BUST
Measure under your arms, around the fullest part of your bust.

WAIST
Measure around the smallest part of your waist while loosely holding the tape measure.

HIP
Measure around the fullest part of your hip while having your feet together.

INSEAM
Measure the length from the crotch seam to the bottom of the leg along the inside of the pant.

PRO



ADAR

ADAR MEDICAL UNIFORMS LLC

24 Division Place
Brooklyn, NY 11222

info@adarmedicaluniforms.com

P. 866.570.6964

www.adaruniforms.com

FOLLOW US!
[@adarmeduniforms](https://www.instagram.com/adarmeduniforms)

