



ADAR



LAB COATS



TABLE OF CONTENT

FABRIC FEATURES

UNIVERSAL COLLECTION.....	3
UNIVERSAL STRETCH COLLECTION.....	22
803.....	4
804.....	6
805.....	8
806.....	10
808.....	12
811.....	14
2814.....	16
2816.....	18
2817.....	20
3308.....	24
3300.....	26
3304.....	28
3302.....	30
WOMEN SIZE/FIT GUIDE.....	32
UNISEX SIZE/FIT GUIDE.....	33
MEN SIZE/FIT GUIDE.....	34

UNIVERSAL

65% POLYESTER 35% COTTON, POPLIN

Our Universal Collection has timeless designs, beautiful silhouettes and dependable functionality. Look your best on every shift.

FABRIC FEATURES





UNISEX STYLE: 803

39" LAB COAT WITH INNER POCKETS

Classic Fit
Center back length 39" in size 42

STYLE FEATURES

- Five-button front closure
- 5 Pockets: 2 large patch pockets, 2 internal pockets and one chest pocket with pen divider
- Adjustable back buttoned belt and back slit
- Side hand vents for easy access



AVAILABLE SIZES:
34 36 38 40 42 44 46 48 50 52 54 56

65% Polyester 35% Cotton, Poplin



UNIVERSAL



STRENGTH



EASY CARE



COTTON BLEND

AVAILABLE COLORS

- Black
- Burgundy
- Ceil Blue
- Hunter Green
- Khaki
- Mandarin Orange
- Navy
- Pewter
- Purple
- Royal Blue
- Silver Gray
- Teal Blue
- White

WOMEN'S **STYLE: 804**

36" SLIM-FIT LAB COAT

Modern Classic Fit
Center back length 36" in size 12

STYLE FEATURES

- Long set-in sleeves
- Five-button front closure
- 5 Pockets: 1 chest pocket with pen divider, 2 patch pockets layered with 2 diagonal pockets
- Back princess seams and back tab belt detail

AVAILABLE SIZES:
6 8 10 12 14 16 18 20 22 24

65% Polyester 35% Cotton, Poplin

UNIVERSAL



STRENGTH



EASY CARE



COTTON BLEND

AVAILABLE COLORS

White



UNISEX STYLE: 805

31" CLASSIC CONSULTATION COAT

Classic Fit
Center back length 31" in size M

STYLE FEATURES

- Long set-in sleeves
- 3-button front closure
- 3 Pockets: 1 chest pocket with pen divider and 2 large lower pockets
- Rounded edges bottom front detail

AVAILABLE SIZES:
XXS XS S M L XL 2X 3X 4X 5X

65% Polyester 35% Cotton, Poplin

UNIVERSAL



STRENGTH



EASY CARE

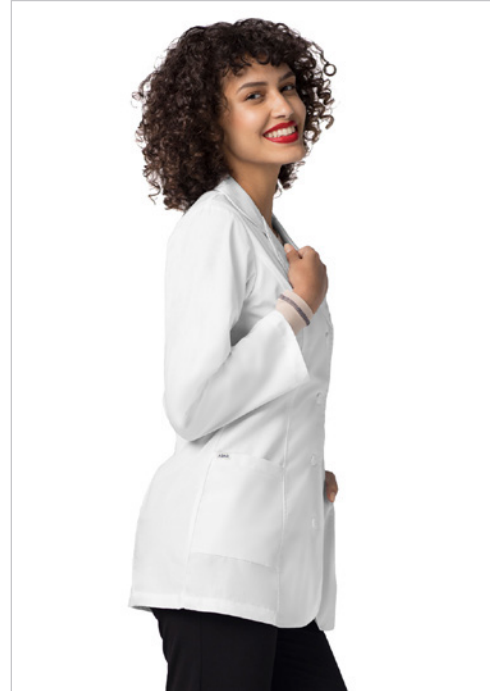


COTTON BLEND



AVAILABLE COLORS

- Black
- Burgundy
- Ceil Blue
- Hunter Green
- Khaki
- Navy
- Olive
- Teal Blue
- White



WOMEN'S **STYLE: 806**

30" PRINCESS CUT CONSULTATION COAT

Classic Fit
Center back length 30" in size M

STYLE FEATURES

Rounded lapels and front bottom edges

Long set-in sleeves

4-button front closure

3 Pockets: 2 roomy patch pockets and 1 chest pocket with pen divider

Front and back princess seams with back belt detail



AVAILABLE SIZES:
XXS XS S M L XL 2X 3X 4X 5X

65% Polyester 35% Cotton, Poplin

UNIVERSAL



STRENGTH



EASY CARE



COTTON BLEND



AVAILABLE COLORS

White

UNISEX STYLE: 808

39" MIDRIFF LAB COAT

Classic Fit
Center back length 39" in size M

STYLE FEATURES

- Five-button front closure
- 4 Pockets: 2 large patch pockets with 1 inner pocket and 1 chest pocket with pen divider
- Fashionable back midriff
- Walking slit for easy movement
- Side hand vents for easy access



AVAILABLE SIZES:
XXS XS S M L XL 2X 3X 4X 5X

65% Polyester 35% Cotton, Poplin

UNIVERSAL



STRENGTH



EASY CARE



COTTON BLEND



AVAILABLE COLORS

White

WOMEN'S STYLE: 811

32" PERFECTION LAB COAT

Modern Classic Fit
Center back length 32" in size M

STYLE FEATURES

- 3-button front closure
- Long set-in sleeves and buttoned cuffs
- Double stitched front and back princess seams
- 2 large front multi layered patch pockets including extra inner pockets
- Back buttoned midriff with bungee loops for adjustable figure flattering fit
- Back yoke seam and walking slit for easy movement

AVAILABLE SIZES:
XXS XS S M L XL 2X 3X 4X 5X

65% Polyester 35% Cotton, Poplin

UNIVERSAL



STRENGTH



EASY CARE



COTTON BLEND

AVAILABLE COLORS

Black

White

WOMEN'S STYLE: 2814

28" TAILORED CONSULTATION COAT

Classic Fit
Center back length 28" in size M

STYLE FEATURES

- Curved princess seaming on front
- 3-button front closure
- Fashionable back midriff belt with pleat detail
- Multi needle stitching
- 4 pockets: 2 Large top entry and 2 side entry pockets

AVAILABLE SIZES:
XXS XS S M L XL 2X 3X 4X 5X

65% Polyester 35% Cotton, Poplin

UNIVERSAL



STRENGTH



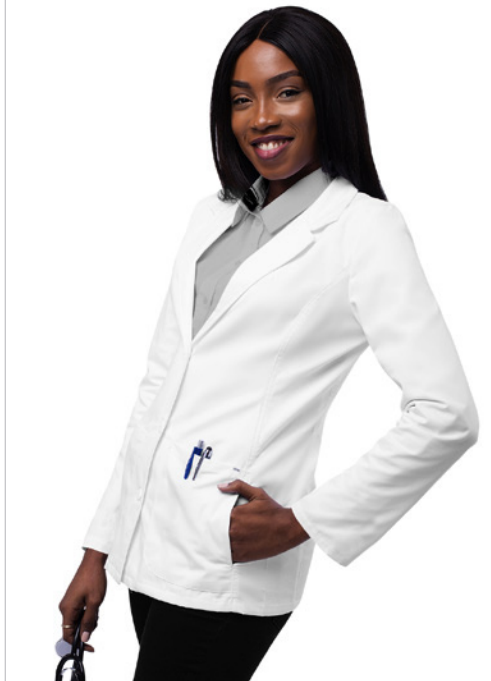
EASY CARE

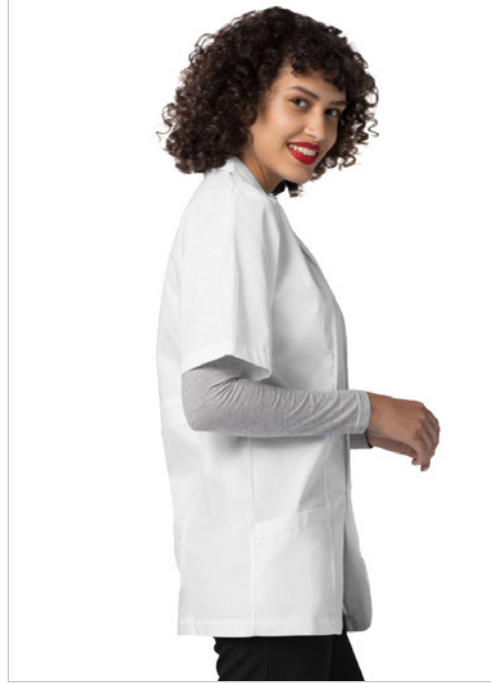


COTTON BLEND

AVAILABLE COLORS

White





UNISEX **STYLE: 2816**

31" SHORT SLEEVE CONSULTATION COAT

Classic Fit
Center back length 31" in size M

- STYLE FEATURES**
- Short set-in sleeves
 - 3-button front closure
 - 1 chest and 2 angled lower pockets
 - Chic back midriff



AVAILABLE SIZES:
XXS XS S M L XL 2X 3X 4X 5X

65% Polyester 35% Cotton, Poplin



UNIVERSAL


STRENGTH


EASY CARE


COTTON BLEND

AVAILABLE COLORS

White

WOMEN'S STYLE: 2817

33" ADJUSTABLE BELT LAB COAT

Modern Classic Fit
Center back length 33" in size M

- STYLE FEATURES**
- 4-button front closure
 - Long set-in sleeves
 - Rounded lapels and front princess seams
 - Back slit for easy movement
 - Back adjustable midriff belt
 - 1 chest pocket and 2 large patch pockets

AVAILABLE SIZES:
XXS XS S M L XL 2X 3X 4X 5X

65% Polyester 35% Cotton, Poplin

UNIVERSAL



STRENGTH



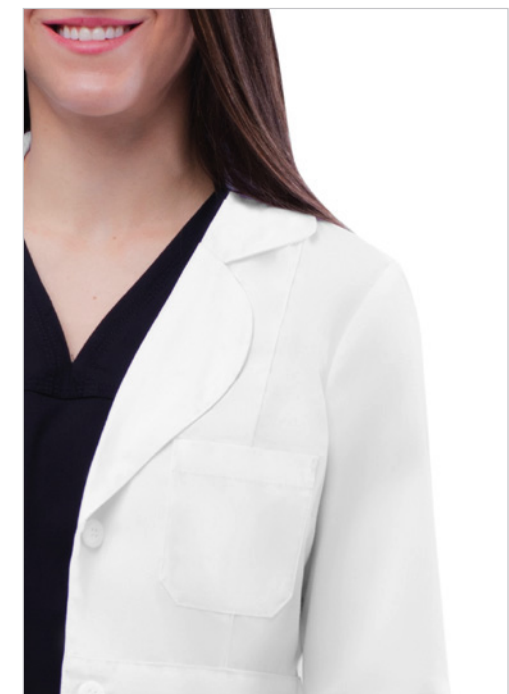
EASY CARE



COTTON BLEND

AVAILABLE COLORS

White



UNIVERSAL

STRETCH

55% COTTON 42% POLYESTER 3% SPANDEX, SOFT TWILL

Our Universal Stretch collection is made of classic essentials that provide you with limitless motion. Look your best on every shift.

FABRIC FEATURES



STRETCH
FABRIC



STRENGTH



COTTON
RICH



EASY
CARE

NEW

3308



UNISEX STYLE: 3308

36" SNAP FRONT LAB COAT

Contemporary Fit
Center back length 36" in size M

STYLE FEATURES

- Notched lapel collar and 4 snap front closure
- Back shoulder yoke and center seaming
- 2 large patch pockets with additional attached sectioned pocket Chest pocket with tailored welt
- Side hand vents for easy access
- Walking slit for easy movement
- All around multi needle top-stitching
- Tagless neck for comfort
- Stretch fabric for limitless motion



AVAILABLE SIZES:
XXS XS S M L XL 2X 3X

55% Cotton 42% Polyester 3% Spandex, Soft Twill



UNIVERSAL

STRETCH



STRETCH FABRIC



STRENGTH



COTTON RICH



EASY CARE

AVAILABLE COLORS

White

WOMEN'S STYLE: 3300

28" TAB-WAIST LAB COAT

Contemporary Fit
Center back length 28" in size M

STYLE FEATURES

- Notched lapel collar and 4 button front closure
- Front and back tailored princess seams with back belt inset
- Front midriff with non functional snap tab detail
- 2 roomy lower patch pockets
- Tagless neck for comfort
- All around multi needle top-stitching
- Stretch fabric for limitless motion

AVAILABLE SIZES:
XXS XS S M L XL 2X 3X

55% Cotton 42% Polyester 3% Spandex, Soft Twill

UNIVERSAL

STRETCH



STRETCH FABRIC



STRENGTH



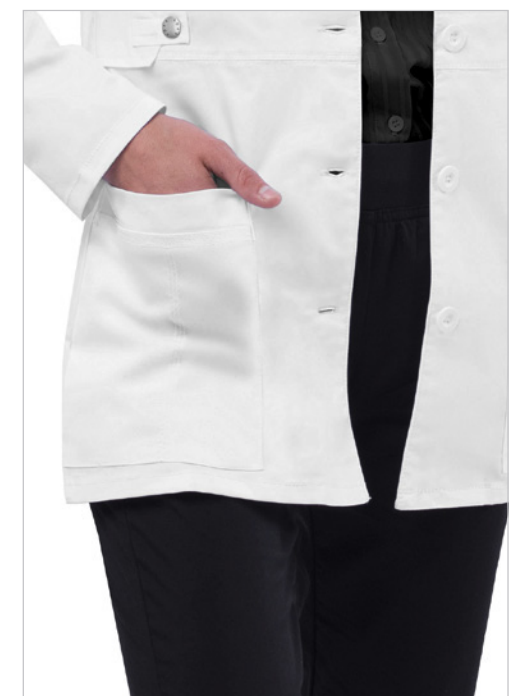
COTTON RICH



EASY CARE

AVAILABLE COLORS

White



WOMEN'S STYLE: 3304

36" TAB-WAIST LAB COAT

Contemporary Fit
Center back length 36" in size M

STYLE FEATURES

- Notched lapel collar and 4 button front closure
- Front and back tailored princess seams with back belt inset
- Front midriff with non functional snap tab detail
- 2 roomy lower patch pockets
- Tagless neck for comfort
- All around multi needle top-stitching
- Stretch fabric for limitless motion

AVAILABLE SIZES:
XXS XS S M L XL 2X 3X

55% Cotton 42% Polyester 3% Spandex, Soft Twill

UNIVERSAL

STRETCH



STRETCH FABRIC



STRENGTH



COTTON RICH



EASY CARE

AVAILABLE COLORS

White



MEN'S STYLE: 3302

31" SNAP FRONT LAB COAT

Contemporary Fit
Center back length 31" in size M

STYLE FEATURES

- Notched lapel collar and 3 snap front closures
- Back shoulder yoke and center seaming
- 2 large patch pockets with attached sectioned pocket and sectioned pen loops
- Chest pocket with tailored welt
- All around multi needle top-stitching
- Tagless neck for comfort
- Stretch fabric for limitless motion

AVAILABLE SIZES:
XXS XS S M L XL 2X 3X

55% Cotton 42% Polyester 3% Spandex, Soft Twill

UNIVERSAL

STRETCH



STRETCH FABRIC



STRENGTH



COTTON RICH



EASY CARE



AVAILABLE COLORS

White

WOMEN'S SIZE CHART & FIT GUIDE



MEN'S SIZE CHART & FIT GUIDE



Our Collections & How They Fit

ADDITION

Contemporary Fit

PRO

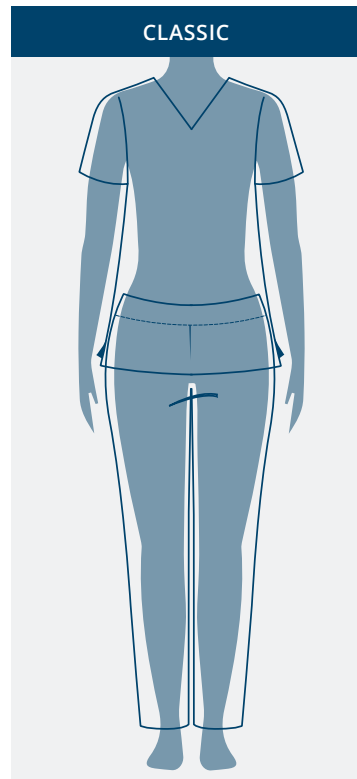
Tailored Fit

UNIVERSAL

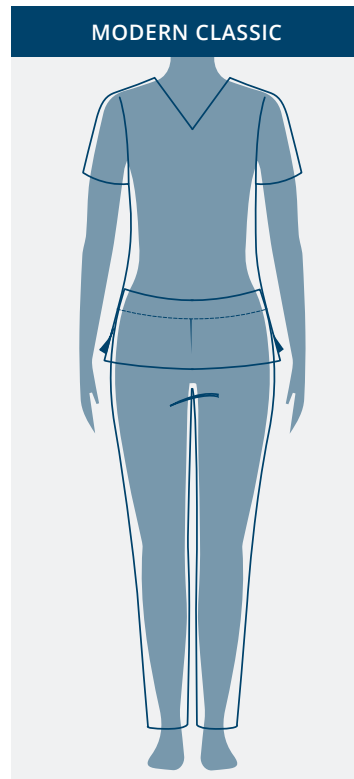
Classic Fit
Modern Classic Fit

UNIVERSAL STRETCH

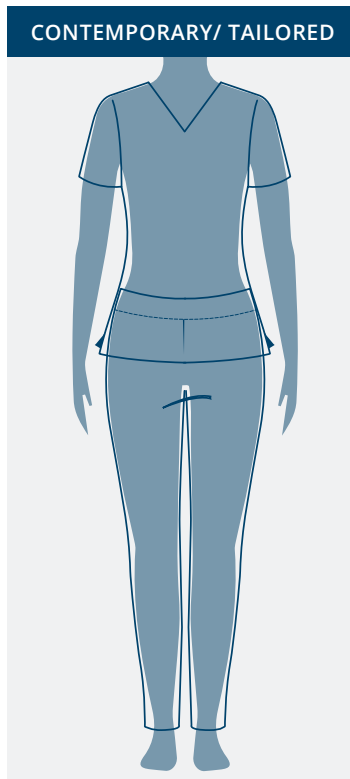
Modern Classic Fit
Contemporary Fit



Traditional roomy cut for maximum comfort.



Fits closer to the body.



Contoured to hug your curves.

Our Collections & How They Fit

ADDITION

Contemporary Fit

PRO

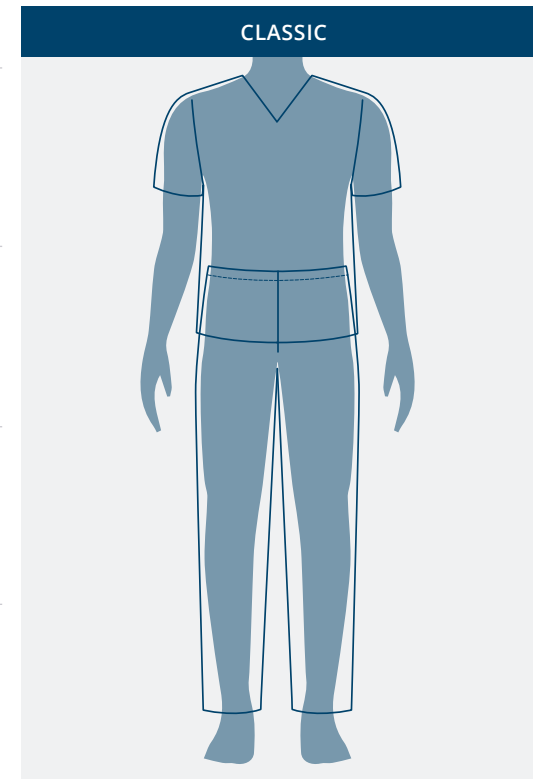
Tailored Fit

UNIVERSAL

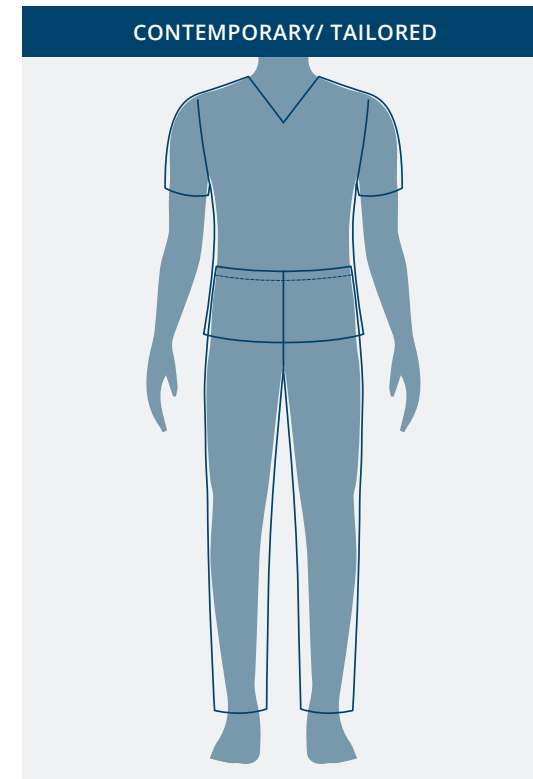
Classic Fit
Modern Classic Fit

UNIVERSAL STRETCH

Modern Classic Fit
Contemporary Fit



Traditional roomy cut for maximum comfort.



Slimmer cut for a modern fit.

ALL MEASUREMENTS COME IN INCHES

WOMEN'S SIZES	CONVERSION	BUST	WAIST	HIP
XXS	0	31-32	23-24	33-34
XS	2/4	33-34	25-26	35-36
S	6/8	35-36	27-28	37-38
M	10/12	37-39	29-31	39-41
L	14/16	40-43	32-35	42-45
XL	18/20	44-47	36-39	46-49
XXL	22/24	48-51	40-43	50-53
3XL	26/28	52-55	44-47	54-57
4XL	30/32	56-59	48-51	58-61
5XL	34/36	60-63	52-55	62-65

REGULAR INSEAM: 30 – 31 ½

PETITE INSEAM: 27 ½ – 29 ½

TALL INSEAM: 32 ½ – 33 ½

If one of your measurements is borderline between two sizes, order the smaller size for a tighter fit or larger for a looser fit.

If your measurements for hips and waist correspond to two different suggested sizes, order the one indicated by your hip measurements.

HOW TO MEASURE

BUST
Measure under your arms, around the fullest part of your bust.

WAIST
Measure around the smallest part of your waist while loosely holding the tape measure.

HIP
Measure around the fullest part of your hip while having your feet together.

INSEAM
Measure the length from the crotch seam to the bottom of the leg along the inside of the pant.



ALL MEASUREMENTS COME IN INCHES

MEN'S SIZES	CONVERSION	CHEST	WAIST	HIP
XXS	30	29-31	21-23	29-31
XS	32/34	32-34	24-26	32-34
S	36/38	35-37	27-29	35-37
M	40/42	38-40	30-32	38-40
L	44/46	41-44	33-36	41-44
XL	48/50	45-48	37-40	45-48
XXL	52/54	49-52	41-44	49-52
3XL	56/58	53-56	45-48	53-56
4XL	60/62	57-60	49-52	57-60
5XL	64	61-64	53-56	61-64

MEN'S INSEAM: 31-32

If one of your measurements is borderline between two sizes, order the smaller size for a tighter fit or larger for a looser fit.

If your measurements for hips and waist correspond to two different suggested sizes, order the one indicated by your hip measurements.

HOW TO MEASURE

CHEST
Measure under your arms, around the fullest part of your bust.

WAIST
Measure around the smallest part of your waist while loosely holding the tape measure.

HIP
Measure around the fullest part of your hip while having your feet together.

INSEAM
Measure the length from the crotch seam to the bottom of the leg along the inside of the pant.



UNISEX SIZE CHART & FIT GUIDE



Our Collections & How They Fit

ADDITION

Contemporary Fit

PRO

Tailored Fit

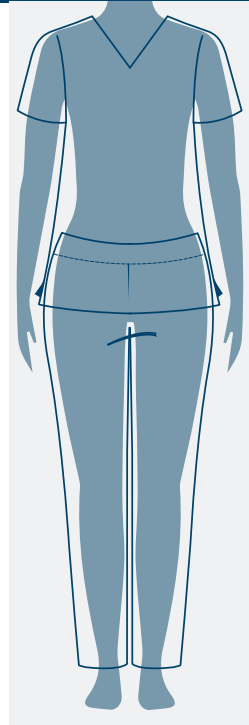
UNIVERSAL

Classic Fit
Modern Classic Fit

UNIVERSAL STRETCH

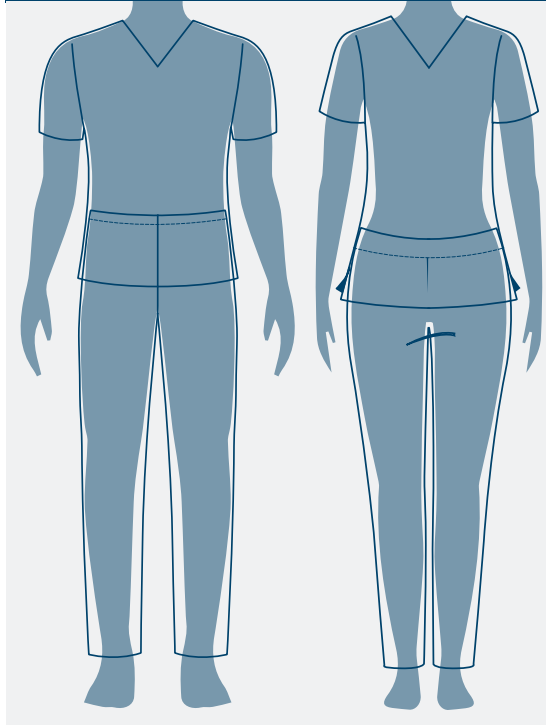
Modern Classic Fit
Contemporary Fit

CLASSIC



Generously cut for maximum comfort.

MODERN CLASSIC



Fits closer to the body.



ALL MEASUREMENTS COME IN INCHES

SIZES	CHEST	WAIST	HIP
XXS	29-31	21-23	29-31
XS	32-34	24-26	32-34
S	35-37	27-29	35-37
M	38-40	30-32	38-40
L	41-44	33-36	41-44
XL	45-48	37-40	45-48
XXL	49-52	41-44	49-52
3XL	53-56	45-48	53-56
4XL	57-60	49-52	57-60
5XL	61-64	53-56	61-64

INSEAM: 31-32

If one of your measurements is borderline between two sizes, order the smaller size for a tighter fit or larger for a looser fit.

If your measurements for hips and waist correspond to two different suggested sizes, order the one indicated by your hip measurements.

HOW TO MEASURE

CHEST

Measure under your arms, around the fullest part of your bust.

WAIST

Measure around the smallest part of your waist while loosely holding the tape measure.

HIP

Measure around the fullest part of your hip while having your feet together.

INSEAM

Measure the length from the crotch seam to the bottom of the leg along the inside of the pant.





ELEVATE YOUR WORKWEAR

FOLLOW US!



@adarmeduniforms

Adar Medical Uniforms, LLC | 24 Division Place | Brooklyn, NY 11222

info@adarmeduniforms.com

Phone 718.935.1197 | Toll Free 866.570.6964 | Fax 718.228.2027

www.adaruniforms.com